

# POMP antibody



Catalog Number: 114057

## Product name

POMP antibody

WB: 1:1000-1:10000

IHC: 1:20-1:200

## Specificity

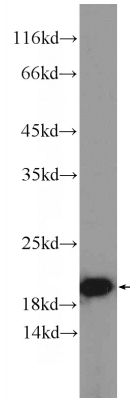
Human, Mouse, Rat; other species not tested.

IF: 1:10-1:100

## Antibody description

POMP Rabbit Polyclonal antibody. Positive WB detected in HeLa cells, HepG2 cells, L02 cells. Positive IF detected in HepG2 cells, Hela cells. Positive IHC detected in human liver tissue, human skin tissue. Positive FC detected in HepG2 cells. Observed molecular weight by Western-blot: 16kd

## Validations



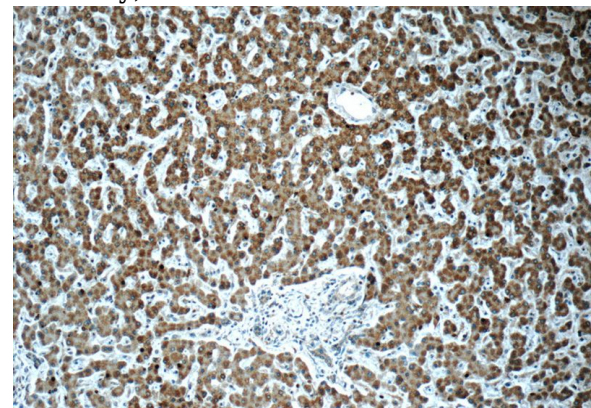
## Preparation

This antibody was obtained by immunization of POMP recombinant protein (Accession Number: NM\_015932). Purification method: Antigen affinity purified.

HeLa cells were subjected to SDS PAGE followed by western blot with Catalog No:114057(POMP Antibody) at dilution of 1:2000

## Formulation

PBS with 0.02% sodium azide and 50% glycerol pH 7.3.



## Storage

Store at -20°C. DO NOT ALIQUOT

## Clonality

Polyclonal

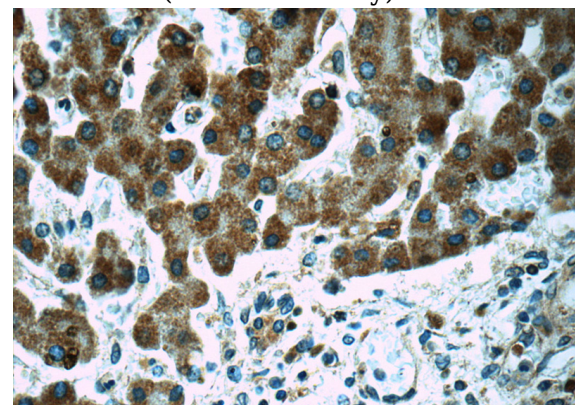
Immunohistochemistry of paraffin-embedded human liver tissue slide using Catalog No:114057(POMP Antibody) at dilution of 1:50

## Ig Type

Rabbit IgG

## Applications

ELISA, IF, IHC, WB, FC



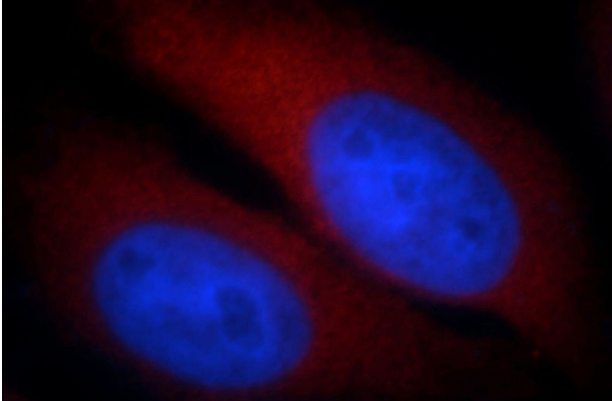
## Dilutions

Recommended Dilution:

# POMP antibody

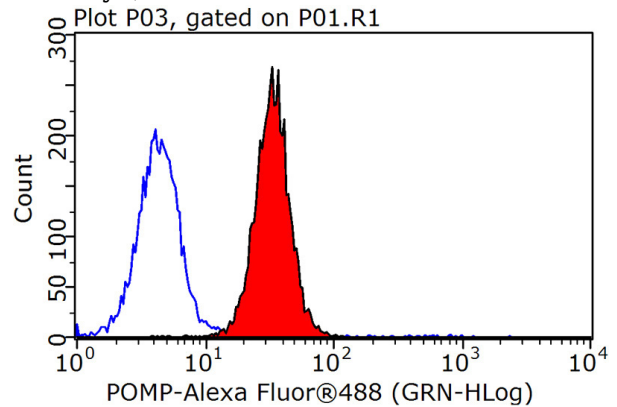
Catalog Number: 114057

Immunohistochemistry of paraffin-embedded human liver tissue slide using Catalog No:114057(POMP Antibody) at dilution of 1:50



Immunofluorescent analysis of HepG2 cells, using POMP antibody Catalog No:114057 at 1:25 dilution and Rhodamine-labeled goat anti-rabbit IgG (red). Blue pseudocolor = DAPI (fluorescent

DNA dye).



1X10<sup>6</sup> HepG2 cells were stained with 0.2ug POMP antibody (Catalog No:114057, red) and control antibody (blue). Fixed with 90% MeOH blocked with 3% BSA (30 min). Alexa Fluor 488-conjugated AffiniPure Goat Anti-Rabbit IgG(H+L) with dilution 1:1500.