

domain-II-of-FIZ1 antibody



Catalog Number: 110057

Product name

domain-II-of-FIZ1 antibody

Specificity

Human; other species not tested.

Antibody description

domain-II-of-FIZ1 Rabbit Polyclonal antibody.
Positive IHC detected in human kidney tissue.
Positive WB detected in human kidney tissue.
Observed molecular weight by Western-blot: 60 kDa

Preparation

This antibody was obtained by immunization of Peptide (Accession Number: NM_032836).
Purification method: Antigen affinity purified.

Formulation

PBS with 0.02% sodium azide and 50% glycerol pH 7.3.

Storage

Store at -20°C. DO NOT ALIQUOT

Clonality

Polyclonal

Ig Type

Rabbit IgG

Applications

ELISA, WB, IHC

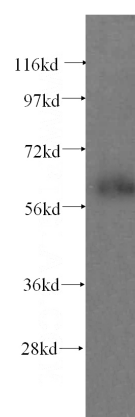
Dilutions

Recommended Dilution:

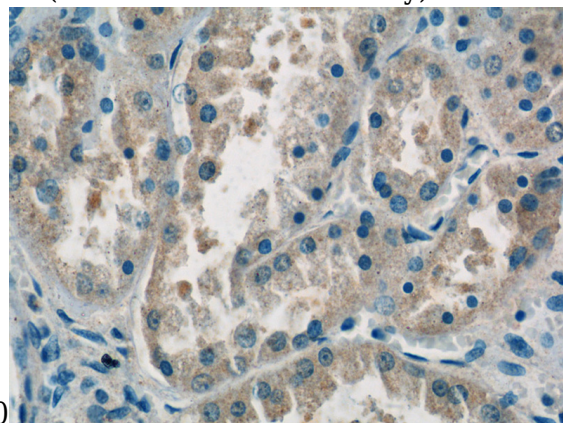
WB: 1:200-1:1000

IHC: 1:20-1:200

Validations



human kidney tissue were subjected to SDS PAGE followed by western blot with Catalog No:110057(domain-II-of-FIZ1 antibody) at dilution



of 1:200

Immunohistochemistry of paraffin-embedded human kidney tissue slide using Catalog No:110057(domain-II-of-FIZ1 Antibody) at dilution of 1:50 (under 40x lens)