

Anti-STAT2 Rabbit antibody



Catalog Number: 167747

Product name

Anti-STAT2 Rabbit antibody

Specificity

Mouse

Antibody description

STAT2 Rabbit monoclonal antibody

Preparation

Antigen: A synthetic peptide of mouse STAT2

Formulation

50nM Tris-Glycine(pH 7.4), 0.15M NaCl,
40%Glycerol, 0.01% sodium azide and 0.05% BSA

Storage

Store at 4°C short term. Store at -20°C long term.
Avoid freeze / thaw cycle.

Clonality

Monoclonal

Ig Type

Rabbit IgG

Applications

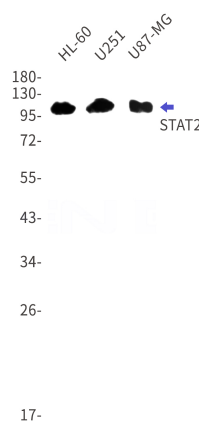
WB, IHC-P

Dilutions

WB: 1/1000

IHC: 1/20

Validations



Western blot detection of STAT2 in HL-60,U251,U87-MG cell lysates using STAT2 Rabbit mAb(1:1000 diluted).Predicted band size:105kDa.Observed band size:113kDa.