

# SPRR3 antibody

Catalog Number: 115647

## Product name

SPRR3 antibody

WB: 1:500-1:5000

IP: 1:200-1:2000

## Specificity

Human; other species not tested.

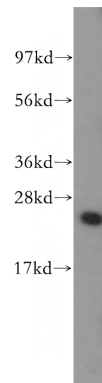
IHC: 1:20-1:200

IF: 1:20-1:200

## Antibody description

SPRR3 Rabbit Polyclonal antibody. Positive IHC detected in human colon cancer tissue, human breast cancer tissue. Positive IF detected in HeLa cells. Positive WB detected in HeLa cells, human liver tissue. Positive IP detected in COLO 320 cells. Observed molecular weight by Western-blot: 22-25 kDa

## Validations



## Preparation

This antibody was obtained by immunization of SPRR3 recombinant protein (Accession Number: XM\_047443702). Purification method: Antigen affinity purified.

HeLa cells were subjected to SDS PAGE followed by western blot with Catalog No:115647(SPRR3 antibody) at dilution of 1:400

## Formulation

PBS with 0.1% sodium azide and 50% glycerol pH 7.3.

## Storage

Store at -20°C. DO NOT ALIQUOT

## Clonality

Polyclonal

## Ig Type

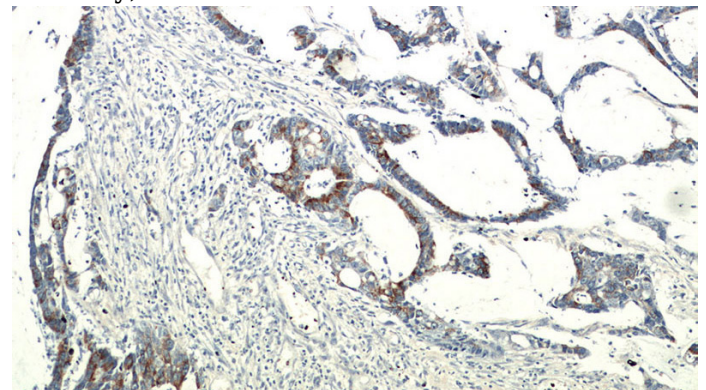
Rabbit IgG

## Applications

ELISA, WB, IHC, IP, IF

## Dilutions

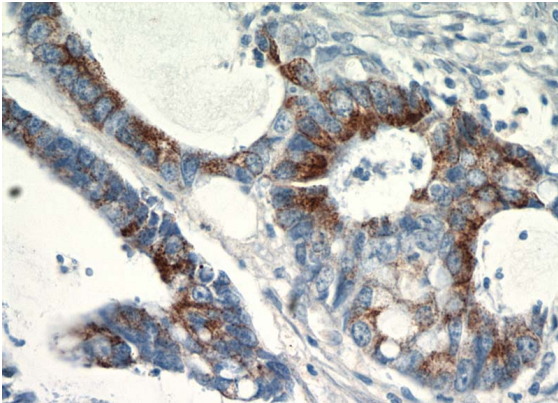
Recommended Dilution:



Immunohistochemical of paraffin-embedded human colon cancer using Catalog No:115647(SPRR3 antibody) at dilution of 1:100 (under 10x lens)

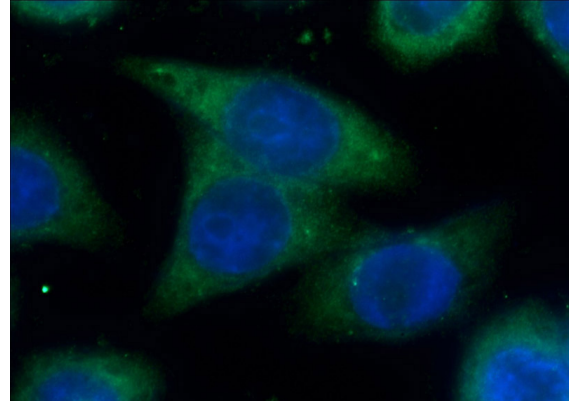
# SPRR3 antibody

Catalog Number: 115647



Immunohistochemical of paraffin-embedded human colon cancer using Catalog No:115647(SPRR3 antibody) at dilution of 1:100 (under 40x lens)

IP Result of anti-SPRR3 (IP:Catalog No:115647, 3ug; Detection:Catalog No:115647 1:500) with COLO 320 cells lysate 1720ug.



Immunofluorescent analysis of HeLa cells using Catalog No:115647(SPRR3 Antibody) at dilution of 1:50 and Alexa Fluor 488-conjugated AffiniPure Goat Anti-Rabbit IgG(H+L)

