

Human Cyclin E1/CCNE1 (His Tag) recombinant protein



Catalog Number: 503647

General Information

Protein Construction

A DNA sequence encoding the full length of human CCNE1 isoform 1 (NP_001229.1) (Met 1-Ala 410) was expressed, with a polyhistidine tag at the N-terminus.

Organism

Human

Expression Host

Baculovirus-Insect Cells

QC Testing

Activity

Measured by its binding ability in a functional ELISA.

Immobilized human CCNE1 (Cat:503647) at 10 µg/ml (100 µl/well) can bind biotinylated human CDK4 (Cat:501272), The EC₅₀ of biotinylated human CDK4 (Cat:501272) is 0.10-0.32 µg/ml.

Purity

> 85 % as determined by SDS-PAGE

Endotoxin

< 1.0 EU per µg of the protein as determined by the LAL method

Stability

Samples are stable for up to twelve months from date of receipt at -70°C

Predicted N terminal

Met

Molecular Mass

The recombinant human CCNE1 consists of 429 amino acids and predicts a molecular mass of 49.3 kDa. It migrates as an approximately 47 kDa band in SDS-PAGE under reducing conditions.

Formulation

Lyophilized from sterile 50mM Tris, 100mM NaCl, pH 8.5, 10% glycerol

1. 5 % trehalose and mannitol are added as protectants before lyophilization.

2. Please contact us for any concerns or special requirements.

Usage Guide

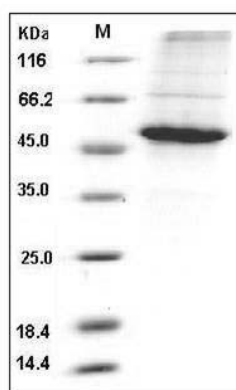
Storage

Store it under sterile conditions at -20°C to -80°C. It is recommended that the protein be aliquoted for optimal storage. Avoid repeated freeze-thaw cycles.

Reconstitution

Adding sterile water, prepare a stock solution of 0.25 mg/ml. Concentration is measured by UV-Vis.

SDS-PAGE



Human CCNE1 / Cyclin-E1 Protein (His Tag) SDS-PAGE