

IKZF1 antibody

Catalog Number: 111647

Product name

IKZF1 antibody

IP: 1:200-1:2000

IHC: 1:20-1:200

Specificity

Human, Mouse, Rat; other species not tested.

Antibody description

IKZF1 Rabbit Polyclonal antibody. Positive WB detected in HeLa cells. Positive IP detected in HeLa cells. Positive IHC detected in human lymphoma tissue. Observed molecular weight by Western-blot: 53 kDa

Preparation

This antibody was obtained by immunization of IKZF1 recombinant protein (Accession Number: NM_001220765). Purification method: Antigen affinity purified.

Formulation

PBS with 0.1% sodium azide and 50% glycerol pH 7.3.

Storage

Store at -20°C. DO NOT ALIQUOT

Clonality

Polyclonal

Ig Type

Rabbit IgG

Applications

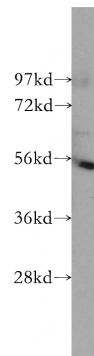
ELISA, WB, IHC, IP

Dilutions

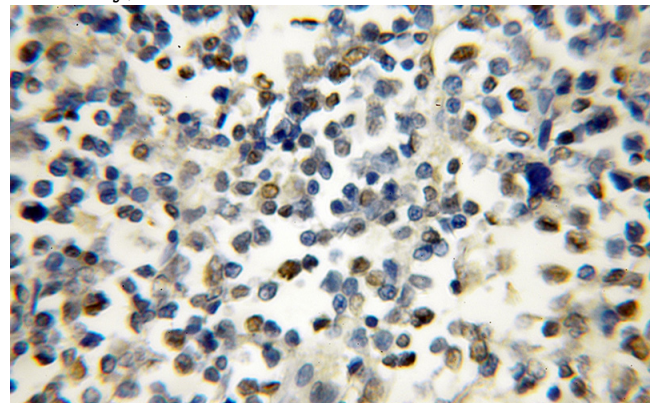
Recommended Dilution:

WB: 1:500-1:5000

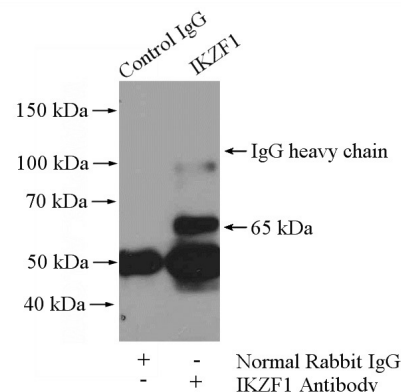
Validations



HeLa cells were subjected to SDS PAGE followed by western blot with Catalog No:111647(IKZF1 antibody) at dilution of 1:500



Immunohistochemical of paraffin-embedded human lymphoma using Catalog No:111647(IKZF1 antibody) at dilution of 1:50 (under 10x lens)



IP Result of anti-IKZF1 (IP:Catalog No:111647, 4ug; Detection:Catalog No:111647 1:500) with

IKZF1 antibody



Catalog Number: 111647

HeLa cells lysate 1200ug.