

# FH antibody

Catalog Number: 110647

## Product name

FH antibody

## Specificity

Human, Mouse, Rat; other species not tested.

## Antibody description

FH Rabbit Polyclonal antibody. Positive IP detected in mouse liver tissue. Positive WB detected in HeLa cells, A431 cells, HEK-293 cells, HepG2 cells, human liver tissue, human placenta tissue, L02 cells, mouse liver tissue, rat liver tissue. Positive IF detected in HeLa cells. Positive IHC detected in human ovary tumor tissue, human placenta tissue. Observed molecular weight by Western-blot: 45-50 kDa

## Preparation

This antibody was obtained by immunization of FH recombinant protein (Accession Number: NM\_000143). Purification method: Antigen affinity purified.

## Formulation

PBS with 0.1% sodium azide and 50% glycerol pH 7.3.

## Storage

Store at -20°C. DO NOT ALIQUOT

## Clonality

Polyclonal

## Ig Type

Rabbit IgG

## Applications

ELISA, WB, IHC, IP, IF

## Dilutions

Recommended Dilution:

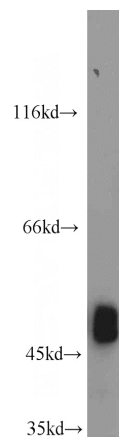
WB: 1:500-1:5000

IP: 1:500-1:5000

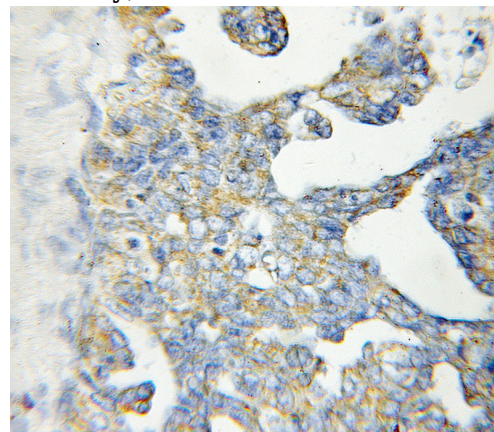
IHC: 1:20-1:200


IF: 1:20-1:200

## Validations



HeLa cells were subjected to SDS PAGE followed by western blot with Catalog No:110647(FH antibody) at dilution of 1:1000



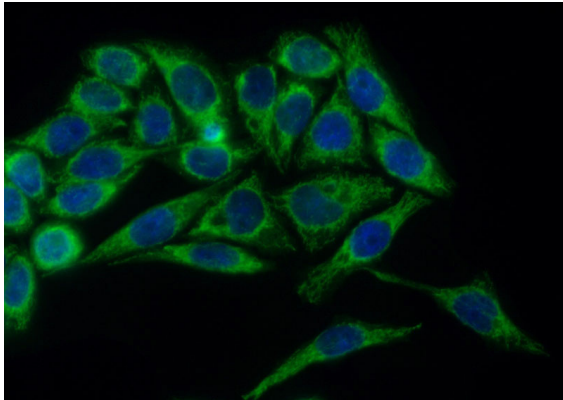
Immunohistochemical of paraffin-embedded human ovary tumor using Catalog No:110647(FH antibody) at dilution of 1:50 (under 40x lens) 

IP Result of anti-FH (IP:Catalog No:110647, 4ug; Detection:Catalog No:110647 1:1000) with mouse liver tissue lysate 4000ug.

# FH antibody

Catalog Number: 110647

---



Immunofluorescent analysis of (10% Formaldehyde) fixed HeLa cells using Catalog No:110647(FH Antibody) at dilution of 1:50 and Alexa Fluor 488-conjugated AffiniPure Goat Anti-Rabbit IgG(H+L)