

Anti-PI3 Kinase p110 beta Rabbit antibody



Catalog Number: 167247

Product name

Rabbit IgG

Anti-PI3 Kinase p110 beta Rabbit antibody

Applications

Specificity

WB, FC, IP

Human

Dilutions

Antibody description

WB: 1/1000

PI3 Kinase p110 beta Rabbit polyclonal antibody

FC: 1/20

Preparation

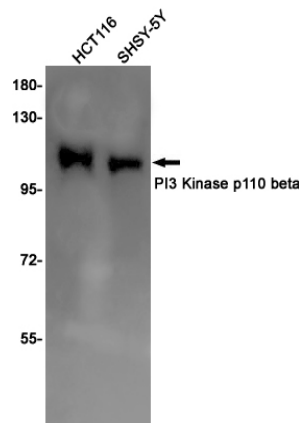
IP: 1/20

Antigen: A synthetic peptide of human PI3 Kinase p110 beta

Validations

Formulation

Supplied in 50nM Tris-Glycine(pH 7.4), 0.15M NaCl, 40%Glycerol, 0.01% sodium azide and 0.05% BSA.



Storage

Store at -20°C. Stable for 12 months from date of receipt.

Clonality

Polyclonal

Western blot detection of PI3 Kinase p110 beta in HCT116,SHSY-5Y cell lysates using PI3 Kinase p110 beta Rabbit pAb(1:1000 diluted).Predicted band size:123KDa.Observed band size:110KDa.

Ig Type