

TOP2A-Specific antibody



Catalog Number: 116247

Product name

TOP2A-Specific antibody

IP: 1:200-1:2000

IHC: 1:20-1:200

Specificity

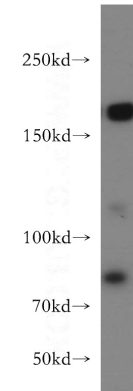
Human; other species not tested.

IF: 1:10-1:100

Antibody description

TOP2A-Specific Rabbit Polyclonal antibody.
Positive WB detected in HeLa cells, A431 cells, L02 cells. Positive IP detected in HeLa cells.
Positive IHC detected in human spleen tissue.
Positive IF detected in HepG2 cells. Observed molecular weight by Western-blot: 170-177kd

Validations



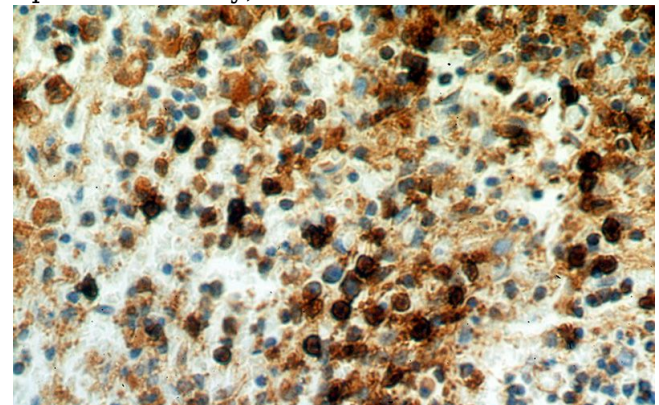
Preparation

This antibody was obtained by immunization of Peptide (Accession Number: NM_001067).
Purification method: Antigen affinity purified.

HeLa cells were subjected to SDS PAGE followed by western blot with Catalog No:116247(TOP2A-Specific antibody) at dilution of 1:400

Formulation

PBS with 0.02% sodium azide and 50% glycerol pH 7.3.



Storage

Store at -20°C. DO NOT ALIQUOT

Clonality

Polyclonal

Ig Type

Rabbit IgG

Applications

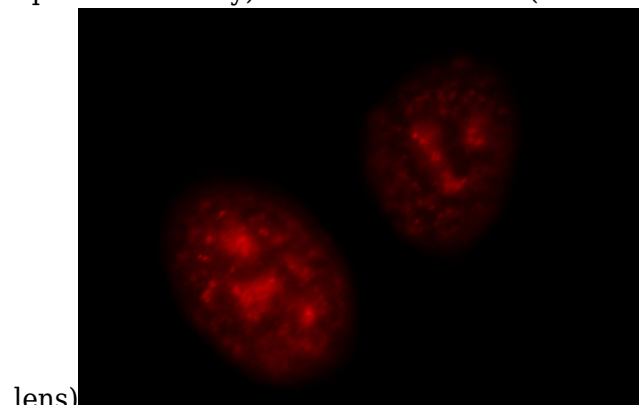
ELISA, WB, IHC, IF, IP

Dilutions

Recommended Dilution:

WB: 1:500-1:5000

Immunohistochemical of paraffin-embedded human spleen using Catalog No:116247(TOP2A-Specific antibody) at dilution of 1:100 (under 40x lens)

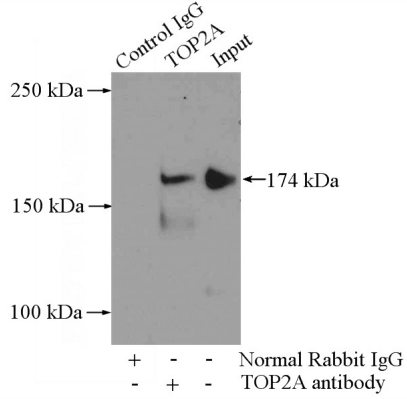


TOP2A-Specific antibody

Catalog Number: 116247

Immunofluorescent analysis of HepG2 cells, using TOP2A antibody Catalog No:116247 at 1:25 dilution and Rhodamine-labeled goat anti-rabbit

IP Result of anti-TOP2A-Specific (IP:Catalog No:116247, 4ug; Detection:Catalog No:116247 1:500) with HeLa cells lysate 2000ug.



IgG (red).