

PSME2 antibody

Catalog Number: 114247

Product name

PSME2 antibody

WB: 1:500-1:5000

IP: 1:200-1:2000

Specificity

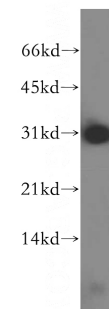
Human, Mouse, Rat; other species not tested.

IF: 1:10-1:100

Antibody description

PSME2 Rabbit Polyclonal antibody. Positive IP detected in MCF-7 cells. Positive WB detected in HepG2 cells, human brain tissue, human kidney tissue, human placenta tissue, MCF7 cells, mouse pancreas tissue, Raji cells. Positive IF detected in MCF-7 cells. Observed molecular weight by Western-blot: 27kd

Validations



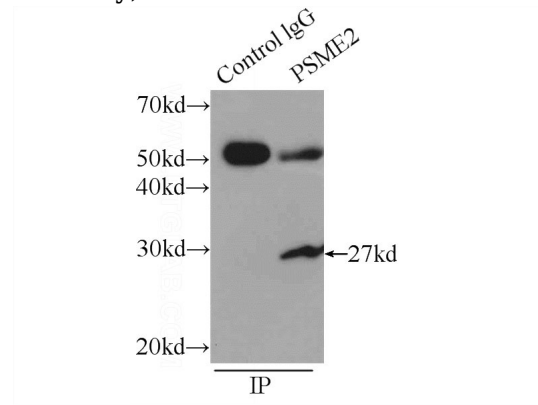
Preparation

This antibody was obtained by immunization of PSME2 recombinant protein (Accession Number: NM_002818). Purification method: Antigen affinity purified.

HepG2 cells were subjected to SDS PAGE followed by western blot with Catalog No:114247(PSME2 antibody) at dilution of 1:500

Formulation

PBS with 0.1% sodium azide and 50% glycerol pH 7.3.



Storage

Store at -20°C. DO NOT ALIQUOT

Clonality

Polyclonal

Ig Type

Rabbit IgG

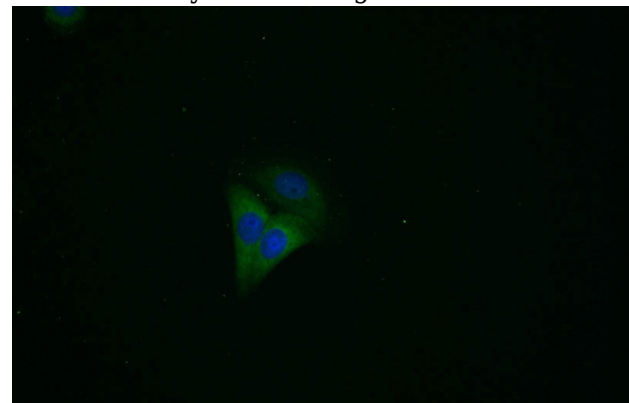
Applications

ELISA, WB, IP, IF

Dilutions

Recommended Dilution:

IP Result of anti-PSME2 (IP:Catalog No:114247, 4ug; Detection:Catalog No:114247 1:500) with MCF-7 cells lysate 2000ug.



PSME2 antibody



Catalog Number: 114247

Immunofluorescent analysis of MCF-7 cells using
Catalog No:114247(PSME2 Antibody) at dilution

of 1:25 and Alexa Fluor 488-conjugated AffiniPure
Goat Anti-Rabbit IgG(H+L)