

# GTSE1 antibody

Catalog Number: 111247

## Product name

GTSE1 antibody

IHC: 1:20-1:200

IF: 1:10-1:100

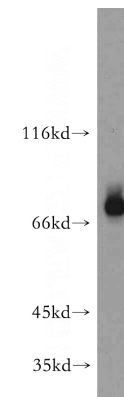
## Specificity

Human; other species not tested.

## Validations

## Antibody description

GTSE1 Rabbit Polyclonal antibody. Positive WB detected in L02 cells, HeLa cells. Positive IF detected in HepG2. Positive IHC detected in human breast cancer. Observed molecular weight by Western-blot: 66-77 kDa



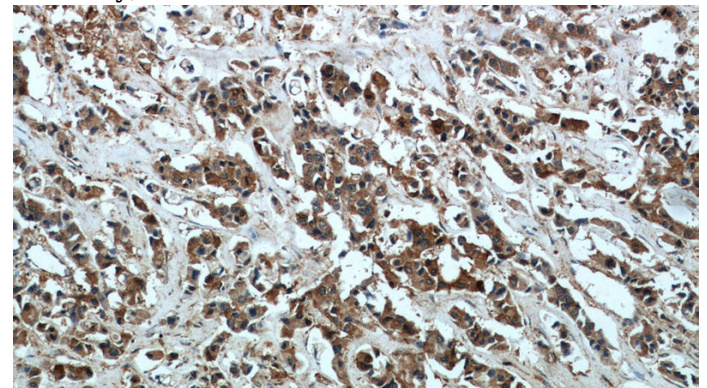
## Preparation

This antibody was obtained by immunization of GTSE1 recombinant protein (Accession Number: BC006325). Purification method: Antigen affinity purified.

L02 cells were subjected to SDS PAGE followed by western blot with Catalog No:111247(GTSE1 antibody) at dilution of 1:300

## Formulation

PBS with 0.02% sodium azide and 50% glycerol pH 7.3.



## Storage

Store at -20°C. DO NOT ALIQUOT

## Clonality

Polyclonal

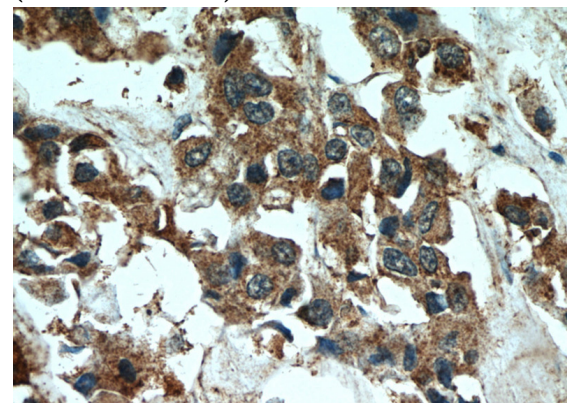
Immunohistochemical of paraffin-embedded human breast cancer using Catalog No:111247(GTSE1 antibody) at dilution of 1:50 (under 10x lens)

## Ig Type

Rabbit IgG

## Applications

ELISA, WB, IF, IHC



## Dilutions

Recommended Dilution:

WB: 1:500-1:5000

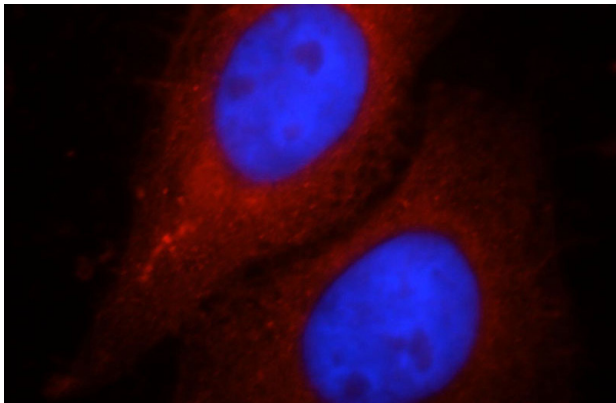
Immunohistochemical of paraffin-embedded

# GTSE1 antibody

Catalog Number: 111247

---

human breast cancer using Catalog No:111247(GTSE1 antibody) at dilution of 1:50 (under 40x lens)



Immunofluorescent analysis of HepG2 cells, using GTSE1 antibody Catalog No:111247 at 1:25 dilution and Rhodamine-labeled goat anti-rabbit IgG (red). Blue pseudocolor = DAPI (fluorescent DNA dye).