

ENDO G antibody

Catalog Number: 110247

Product name

ENDO G antibody

Specificity

Human, Mouse, Rat; other species not tested.

Antibody description

ENDO G Rabbit Polyclonal antibody. Positive IP detected in mouse heart tissue. Positive WB detected in mouse kidney tissue, mouse heart tissue, mouse liver tissue, mouse skeletal muscle tissue, rat kidney tissue. Observed molecular weight by Western-blot: 27-30 kDa

Preparation

This antibody was obtained by immunization of ENDO G recombinant protein (Accession Number: NM_004435). Purification method: Antigen affinity purified.

Formulation

PBS with 0.02% sodium azide and 50% glycerol pH 7.3.

Storage

Store at -20°C. DO NOT ALIQUOT

Clonality

Polyclonal

Ig Type

Rabbit IgG

Applications

ELISA, WB, IP

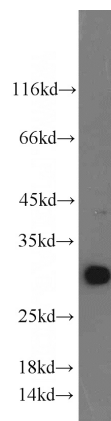
Dilutions

Recommended Dilution:

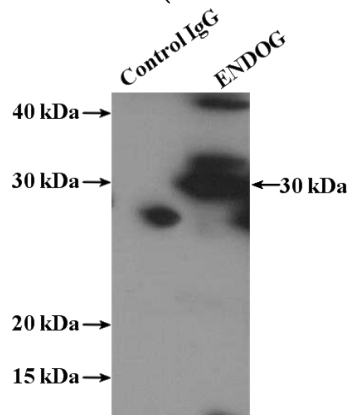
WB: 1:500-1:5000

IP: 1:500-1:5000

Validations



mouse kidney tissue were subjected to SDS PAGE followed by western blot with Catalog No:110247 (ENDO G antibody) at dilution of 1:1000



IP Result of anti-ENDO G (IP: Catalog No:110247, 4ug; Detection: Catalog No:110247 1:1000) with mouse heart tissue lysate 4000ug.