

DIS3L antibody

Catalog Number: 109947

Product name

DIS3L antibody

Immunogen

[Human DIS3L Recombinant protein \(His tag\)](#)

Specificity

Human; other species not tested.

Antibody description

DIS3L Rabbit Polyclonal antibody. Positive WB detected in K-562 cells. Positive IP detected in K-562 cells. Observed molecular weight by Western-blot: 121 kDa

Preparation

This antibody was obtained by immunization of DIS3L recombinant protein (Accession Number: NM_001323945). Purification method: Antigen affinity purified.

Formulation

PBS with 0.1% sodium azide and 50% glycerol pH 7.3.

Storage

Store at -20°C. DO NOT ALIQUOT

Clonality

Polyclonal

Ig Type

Rabbit IgG

Applications

ELISA, WB, IP

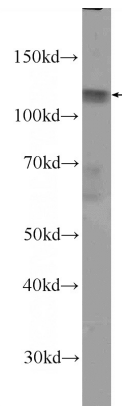
Dilutions

Recommended Dilution:

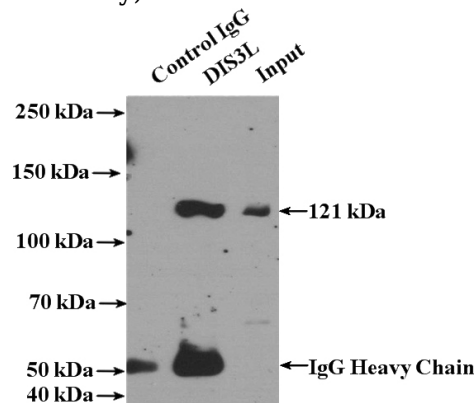
WB: 1:200-1:1000

IP: 1:200-1:1000

Validations



K-562 cells were subjected to SDS PAGE followed by western blot with Catalog No:109947(DIS3L Antibody) at dilution of 1:100



IP Result of anti-DIS3L (IP:Catalog No:109947, 4ug; Detection:Catalog No:109947 1:300) with K-562 cells lysate 3200ug.