

# NAPB antibody

Catalog Number: 112947

## Product name

NAPB antibody

## Immunogen

[Human NAPB Recombinant protein \(GST tag\)](#)

## Specificity

Human, Mouse, Rat; other species not tested.

## Antibody description

NAPB Rabbit Polyclonal antibody. Positive WB detected in mouse brain tissue. Positive IP detected in mouse brain tissue. Positive IF detected in HepG2 cells. Positive IHC detected in human gliomas tissue. Observed molecular weight by Western-blot: 35-38 kDa

## Preparation

This antibody was obtained by immunization of NAPB recombinant protein (Accession Number: NM\_022080). Purification method: Antigen affinity purified.

## Formulation

PBS with 0.02% sodium azide and 50% glycerol pH 7.3.

## Storage

Store at -20°C. DO NOT ALIQUOT

## Clonality

Polyclonal

## Ig Type

Rabbit IgG

## Applications

ELISA, WB, IHC, IF, IP

## Dilutions

Recommended Dilution:

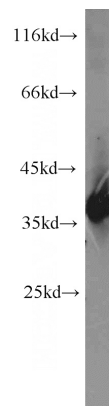
WB: 1:500-1:5000

IP: 1:500-1:5000

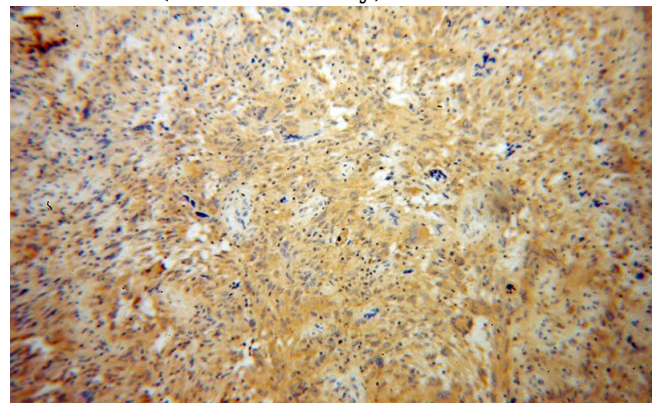
IHC: 1:20-1:200

IF: 1:20-1:200

## Validations



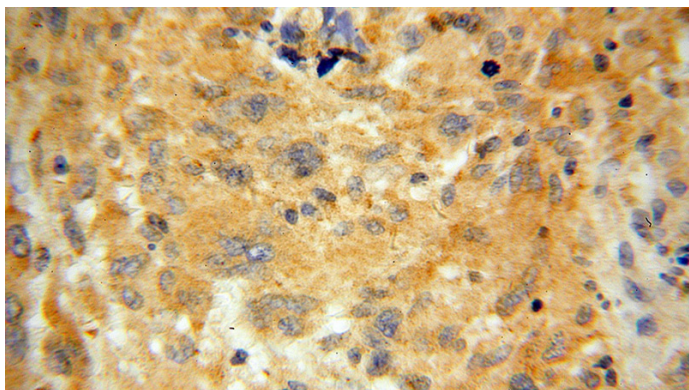
mouse brain tissue were subjected to SDS PAGE followed by western blot with Catalog No:112947(NAPB antibody) at dilution of 1:1200



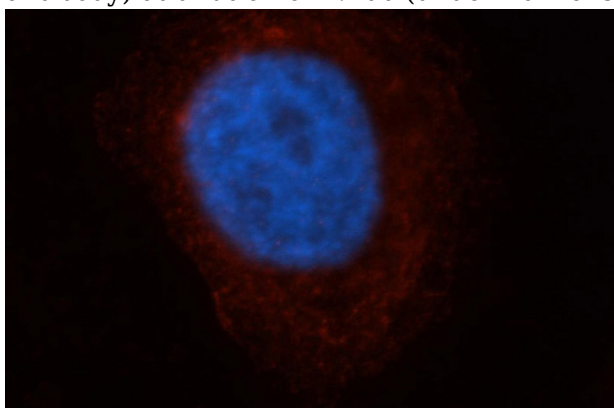
Immunohistochemical of paraffin-embedded human gliomas using Catalog No:112947(NAPB antibody) at dilution of 1:100 (under 10x lens)

# NAPB antibody

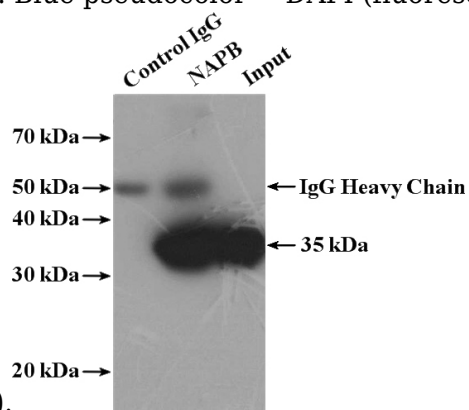
Catalog Number: 112947



Immunohistochemical of paraffin-embedded human gliomas using Catalog No:112947(NAPB antibody) at dilution of 1:100 (under 40x lens)



Immunofluorescent analysis of HepG2 cells, using NAPB antibody Catalog No:112947 at 1:50 dilution and Rhodamine-labeled goat anti-rabbit IgG (red). Blue pseudocolor = DAPI (fluorescent



DNA dye).

IP Result of anti-NAPB (IP:Catalog No:112947, 4ug; Detection:Catalog No:112947 1:1000) with mouse brain tissue lysate 4000ug.