

# ITGB1BP2 antibody



Catalog Number: 111947

## Product name

ITGB1BP2 antibody

## Specificity

human, mouse, rat; other species not tested.

## Antibody description

ITGB1BP2 Rabbit Polyclonal antibody. Positive WB detected in human heart tissue. Positive IF detected in HepG2. Observed molecular weight by Western-blot: 40-45kd

## Preparation

This antibody was obtained by immunization of ITGB1BP2 recombinant protein (Accession Number: BC108901). Purification method: Antigen affinity purified.

## Formulation

PBS with 0.02% sodium azide and 50% glycerol pH 7.3.

## Storage

Store at -20°C. DO NOT ALIQUOT

## Clonality

Polyclonal

## Ig Type

Rabbit IgG

## Applications

ELISA, WB, IF

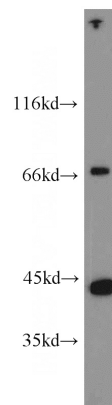
## Dilutions

Recommended Dilution:

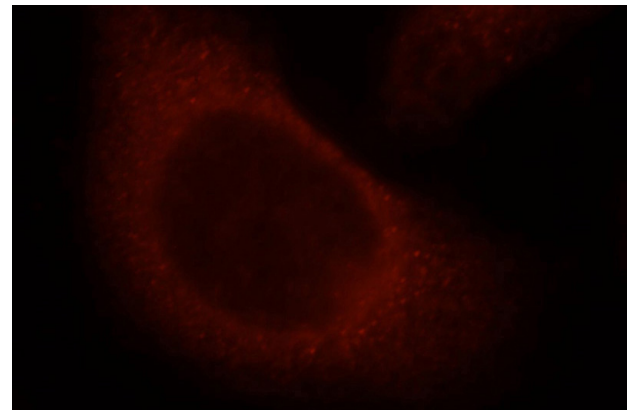
WB: 1:200-1:2000

IF: 1:10-1:100

## Validations



human heart tissue were subjected to SDS PAGE followed by western blot with Catalog No:111947(ITGB1BP2 antibody) at dilution of 1:600



Immunofluorescent analysis of HepG2 cells, using ITGB1BP2 antibody Catalog No:111947 at 1:25 dilution and Rhodamine-labeled goat anti-rabbit IgG (red).