

# GFM1 antibody

Catalog Number: 110947

## Product name

GFM1 antibody

IP: 1:500-1:5000

IHC: 1:20-1:200

## Specificity

Human, Mouse, Rat; other species not tested.

## Antibody description

GFM1 Rabbit Polyclonal antibody. Positive IP detected in HeLa cells. Positive WB detected in mouse kidney tissue, HeLa cells, human heart tissue. Positive IHC detected in human kidney tissue. Observed molecular weight by Western-blot: 70 kDa

## Preparation

This antibody was obtained by immunization of GFM1 recombinant protein (Accession Number: NM\_024996). Purification method: Antigen affinity purified.

## Formulation

PBS with 0.02% sodium azide and 50% glycerol pH 7.3.

## Storage

Store at -20°C. DO NOT ALIQUOT

## Clonality

Polyclonal

## Ig Type

Rabbit IgG

## Applications

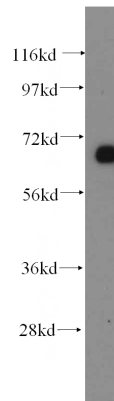
ELISA, WB, IHC, IP

## Dilutions

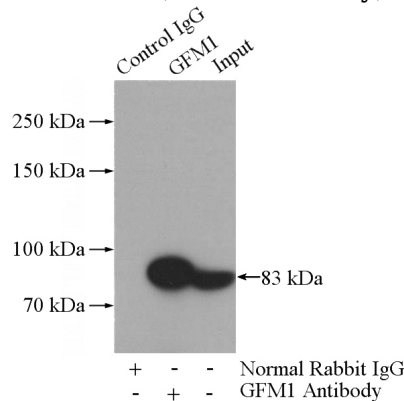
Recommended Dilution:

WB: 1:500-1:5000

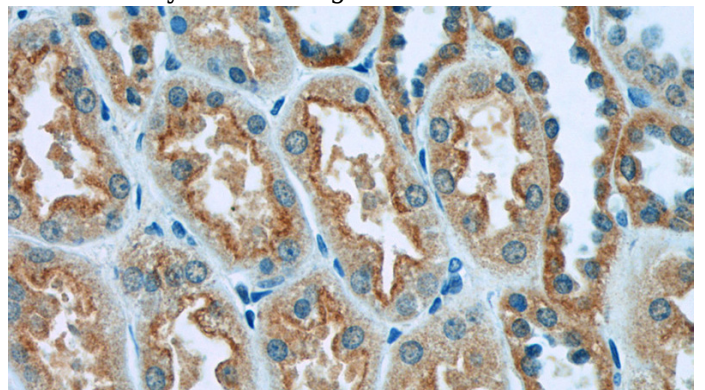
## Validations



mouse kidney tissue were subjected to SDS PAGE followed by western blot with Catalog No:110947(GFM1 antibody) at dilution of 1:500



IP Result of anti-GFM1 (IP:Catalog No:110947, 4ug; Detection:Catalog No:110947 1:1000) with HeLa cells lysate 1200ug.



Immunohistochemistry of paraffin-embedded human kidney tissue slide using Catalog

# GFM1 antibody



Catalog Number: 110947

---

No:110947(GFM1 Antibody) at dilution of 1:50 (under 40x lens)