

# Human IL-6 recombinant protein



Catalog Number: 500947

## General Information

### Protein Construction

A DNA sequence encoding the mature form of human IL6 (NP\_000591.1) (Val 30-Met 212) was expressed, with an initial Met at the N-terminus.

### Organism

Human

### Expression Host

E. coli

## QC Testing

### Activity

1. Measured by its binding ability in a functional ELISA. Immobilized recombinant human IL-6 at 8 µg/ml (100 µl/well) can bind recombinant human IL6R with a linear range of 1.25-20.0 ng/mL.
2. Measured in a cell proliferation assay using TF-1 human erythroleukemic cells. The ED<sub>50</sub> for this effect is 0.75-3 ng/mL. The specific activity of Recombinant Human IL-6 is approximately  $0.35 \times 10^5$  IU/µg.

### Purity

> 95 % as determined by SDS-PAGE

### Endotoxin

Please contact us for more information.

### Stability

Samples are stable for up to twelve months from date of receipt at -70°C

### Predicted N terminal

Met

### Molecular Mass

The recombinant human IL6 consists of 184 amino acids and migrates with an apparent molecular mass of 20.3 kDa as estimated in SDS-PAGE under reducing conditions.

### Formulation

Lyophilized from sterile PBS, pH 7.4

1. 5 % trehalose and mannitol are added as protectants before lyophilization.

2. Please contact us for any concerns or special requirements.

## Usage Guide

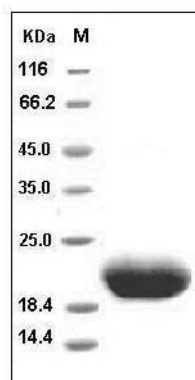
### Storage

Store it under sterile conditions at -20°C to -80°C. It is recommended that the protein be aliquoted for optimal storage. Avoid repeated freeze-thaw cycles.

### Reconstitution

Adding sterile water, prepare a stock solution of 0.25 mg/ml. Concentration is measured by UV-Vis.

### SDS-PAGE



Human IL6 / Interleukin-6 Protein SDS-PAGE