

# Anti-Phospho-c-Jun (Ser73) Rabbit antibody



Catalog Number: 167147

## Product name

Anti-Phospho-c-Jun (Ser73) Rabbit antibody

## Specificity

Human, Mouse, Rat

## Antibody description

Phospho-c-Jun (Ser73) Rabbit polyclonal antibody

## Preparation

Antigen: Peptide sequence around phosphorylation site of serine 73 (L-A-S(p)-P-E) derived from Human c-Jun.

## Formulation

Supplied at 1.0mg/mL in phosphate buffered saline (without Mg<sup>2+</sup> and Ca<sup>2+</sup>), pH 7.4, 150mM NaCl, 0.02% sodium azide and 50% glycerol.

## Storage

Store at 4°C short term. Store at -20°C long term. Avoid freeze / thaw cycle.

## Clonality

Polyclonal

## Ig Type

Rabbit IgG

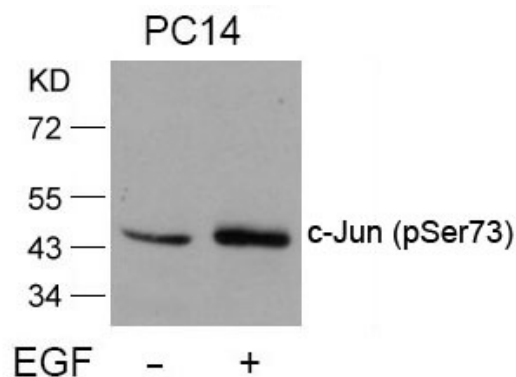
## Applications

WB, IHC-P

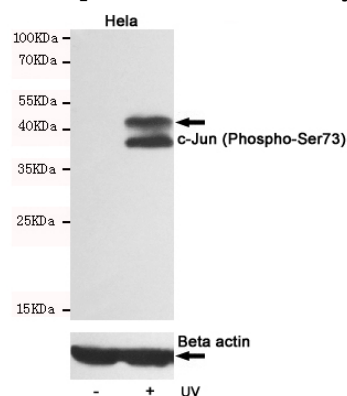
## Dilutions

WB:1/500-1/1000 IHC:1/50-1/100

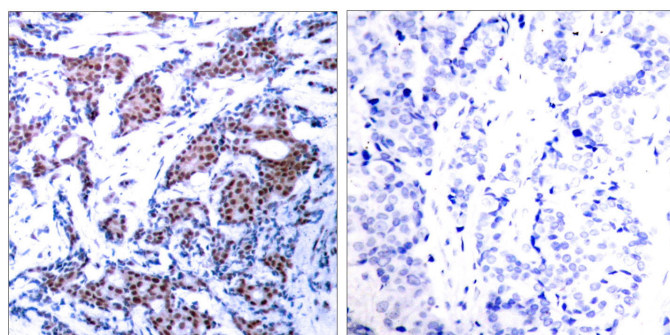
## Validations



Western blot analysis of extracts from PC14 cells untreated or treated with EGF using c-Jun (Phospho-Ser73) Antibody .



Western blot analysis of extracts from HeLa cells, untreated or treated with UV, using c-Jun (Phospho-Ser73) Rabbit pAb (167147,1:500 diluted,upper) or Beta actin Mouse mAb (200068-8F10,lower).



Immunohistochemical analysis of paraffin-embedded human breast carcinoma tissue using c-Jun (Phospho-Ser73) Antibody (left) or the same antibody preincubated with blocking peptide (right).