

Human Dectin-1/CLEC7A (Fc Tag) recombinant protein



Catalog Number: 504147

General Information

Gene Name Synonym

Putative uncharacterized protein
DKFZp686L24211; cDNA FLJ59887, moderately similar to Homo sapiens C-type lectin domain family 7, member A (CLEC7A), transcript variant 4

Protein Construction

A DNA sequence encoding the human Dectin1 (NP_072092.2) (Thr 66- Met201) was expressed with the Fc region of human IgG1 at the N-terminus.

Organism

Human

Expression Host

Human Cells

QC Testing

Purity

> 85 % as determined by SDS-PAGE

Endotoxin

< 1.0 EU per µg of the protein as determined by the LAL method

Stability

Samples are stable for up to twelve months from date of receipt at -70°C

Predicted N terminal

Glu

Molecular Mass

The recombinant human Dectin1/Fc comprises 373 amino acids and has a predicted molecular mass of 42.1 kDa. The apparent molecular mass of the protein is approximately 44 kDa in SDS-PAGE under reducing conditions.

Formulation

Lyophilized from sterile PBS, pH 7.4, 5% Glycerol.
1. 5 % trehalose and mannitol are added as protectants before lyophilization.
2. Please contact us for any concerns or special requirements.

Usage Guide

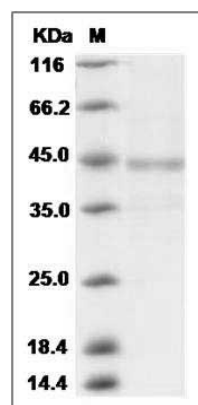
Storage

Store it under sterile conditions at -20°C to -80°C. It is recommended that the protein be aliquoted for optimal storage. Avoid repeated freeze-thaw cycles.

Reconstitution

Adding sterile water, prepare a stock solution of 0.25 mg/ml. Concentration is measured by UV-Vis.

SDS-PAGE



Human CLEC7A / Dectin-1 / CLECSF12 Protein (Fc Tag) SDS-PAGE