

GPT2 antibody

Catalog Number: 111147

Product name

GPT2 antibody

WB: 1:200-1:2000

IP: 1:200-1:2000

Specificity

Human, Mouse, Rat; other species not tested.

IHC: 1:20-1:200

IF: 1:20-1:200

Antibody description

GPT2 Rabbit Polyclonal antibody. Positive WB detected in mouse kidney tissue, human skeletal muscle tissue. Positive IP detected in mouse kidney tissue. Positive IF detected in HepG2 cells. Positive IHC detected in human kidney tissue, human skeletal muscle tissue. Observed molecular weight by Western-blot: 58 kDa

Preparation

This antibody was obtained by immunization of GPT2 recombinant protein (Accession Number: NM_133443). Purification method: Antigen affinity purified.

Formulation

PBS with 0.02% sodium azide and 50% glycerol pH 7.3.

Storage

Store at -20°C. DO NOT ALIQUOT

Clonality

Polyclonal

Ig Type

Rabbit IgG

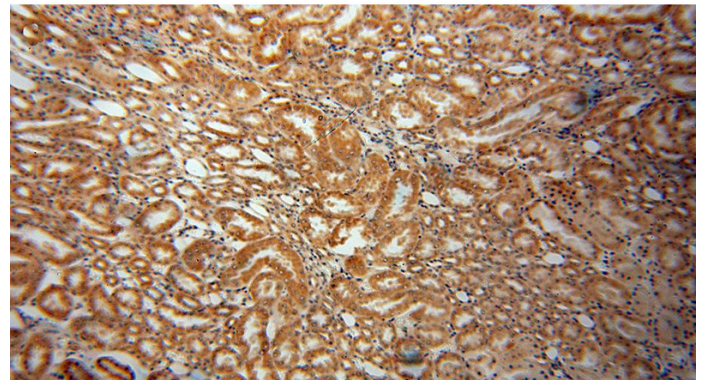
Applications

ELISA, IHC, WB, IP, IF

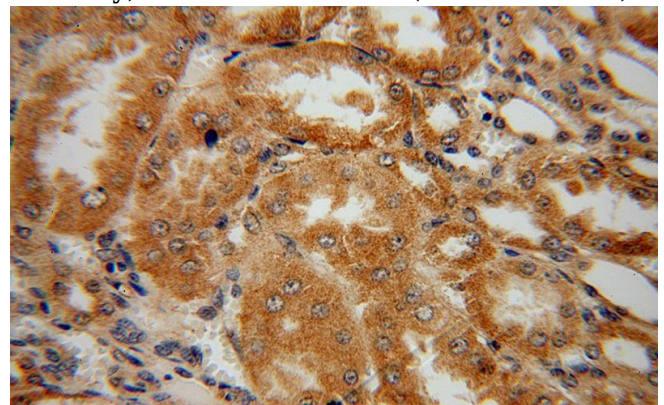
Dilutions

Recommended Dilution:

Validations



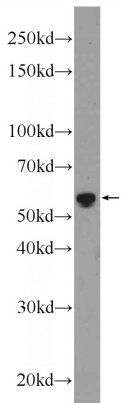
Immunohistochemical of paraffin-embedded human kidney using Catalog No:111147(GPT2 antibody) at dilution of 1:100 (under 10x lens)



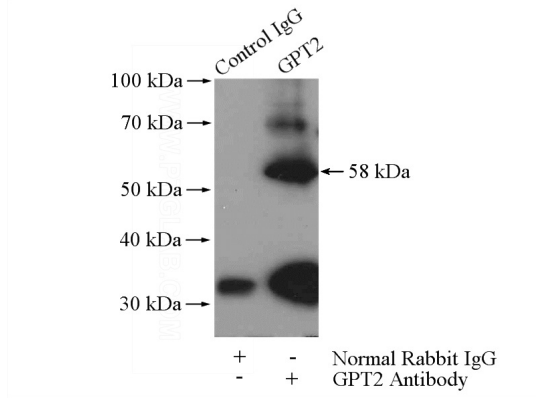
Immunohistochemical of paraffin-embedded human kidney using Catalog No:111147(GPT2 antibody) at dilution of 1:100 (under 40x lens)

GPT2 antibody

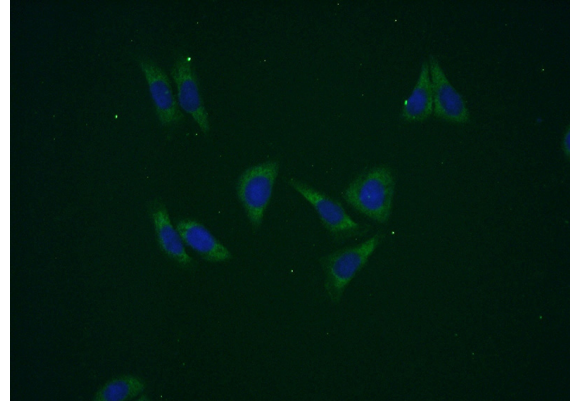
Catalog Number: 111147



mouse kidney tissue were subjected to SDS PAGE followed by western blot with Catalog No:111147(GPT2 Antibody) at dilution of 1:600



IP Result of anti-GPT2 (IP:Catalog No:111147, 4ug; Detection:Catalog No:111147 1:500) with mouse kidney tissue lysate 7200ug.



Immunofluorescent analysis of (-20oc Ethanol) fixed HepG2 cells using Catalog No:111147(GPT2 Antibody) at dilution of 1:50 and Alexa Fluor 488-conjugated AffiniPure Goat Anti-Rabbit IgG(H+L)