

# PKC beta antibody



Catalog Number: 113847

## Product name

PKC beta antibody

Recommended Dilution:

WB: 1:500-1:5000

## Specificity

Human, Mouse, Rat; other species not tested.

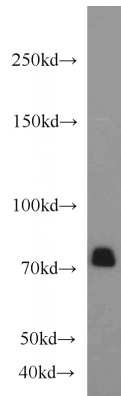
IP: 1:500-1:5000

IHC: 1:20-1:200

## Antibody description

PKC beta Rabbit Polyclonal antibody. Positive IP detected in mouse brain tissue. Positive WB detected in mouse brain tissue, K-562 cells, mouse thymus tissue, rat brain tissue. Positive IHC detected in human pancreas cancer tissue, human breast cancer tissue, human stomach tissue. Observed molecular weight by Western-blot: 77 kDa

## Validations



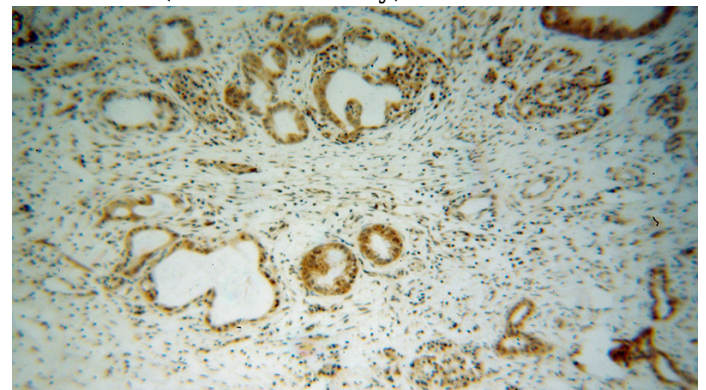
## Preparation

This antibody was obtained by immunization of PKC beta recombinant protein (Accession Number: NM\_002738). Purification method: Antigen affinity purified.

mouse brain tissue were subjected to SDS PAGE followed by western blot with Catalog No:113847(PRKCB antibody) at dilution of 1:1000

## Formulation

PBS with 0.1% sodium azide and 50% glycerol pH 7.3.



## Storage

Store at -20°C. DO NOT ALIQUOT

## Clonality

Polyclonal

## Ig Type

Rabbit IgG

## Applications

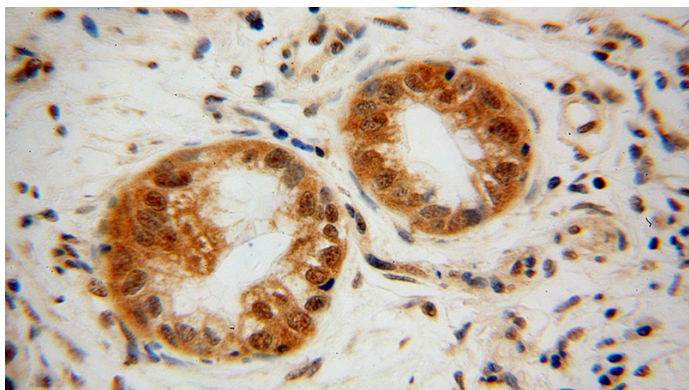
ELISA, WB, IHC, IP

Immunohistochemical of paraffin-embedded human pancreas cancer using Catalog No:113847(PRKCB antibody) at dilution of 1:50 (under 10x lens)

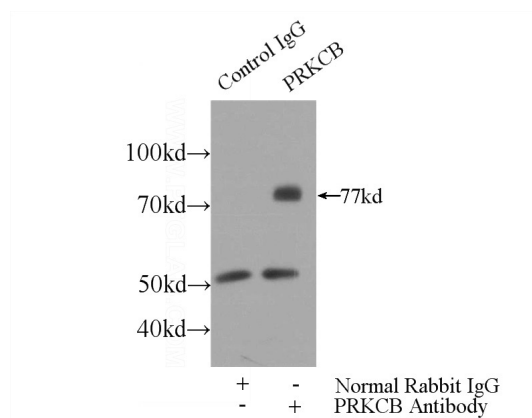
## Dilutions

# PKC beta antibody

Catalog Number: 113847



Immunohistochemical of paraffin-embedded human pancreas cancer using Catalog No:113847(PKCβ antibody) at dilution of 1:50 (under 40x lens)



IP Result of anti-PRKCB (IP:Catalog No:113847, 3ug; Detection:Catalog No:113847 1:1000) with mouse brain tissue lysate 4000ug.