

# Anti-Myelin oligodendrocyte glycoprotein antibody



Catalog Number: 102847

## Product name

Anti-Myelin oligodendrocyte glycoprotein antibody

## Clonality

Polyclonal

## Immunogen

[Human Myelin oligodendrocyte glycoprotein \(aa 30-149, His Tag\)](#)

## Ig Type

Rabbit IgG

## Applications

ELISA, IHC-P

## Specificity

Human MOG

## Dilutions

ELISA: 0.1-0.2 µg/mL

## Antibody description

Rabbit polyclonal to Myelin oligodendrocyte glycoprotein

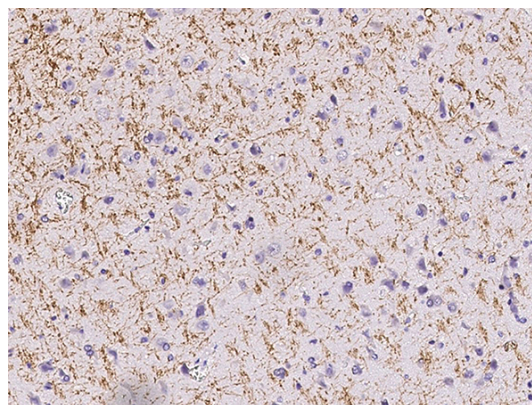
This antibody can be used at 0.1-0.2 µg/mL with the appropriate secondary reagents to detect Human MOG. The detection limit for Human MOG is approximately 0.00975 ng/well.

## Preparation

Produced in rabbits immunized with purified, recombinant Human MOG (rh MOG; NP\_996532.2; Gly 30-Tyr 149). MOG specific IgG was purified by human MOG affinity chromatography

IHC-P: 0.1-2 µg/mL

## Validations



MOG Antibody, Rabbit PAb, Antigen Affinity Purified, Immunohistochemistry

## Formulation

0.2 µm filtered solution in PBS with 5% trehalose

## Storage

This antibody can be stored at 2°C-8°C for one month without detectable loss of activity. Antibody products are stable for twelve months from date of receipt when stored at -20°C to -80°C. Preservative-Free.

Sodium azide is recommended to avoid contamination (final concentration 0.05%-0.1%). It is toxic to cells and should be disposed of properly. Avoid repeated freeze-thaw cycles.

Immunochemical staining of human MOG in human brain with rabbit polyclonal antibody (0.3 µg/mL, formalin-fixed paraffin embedded sections).