

INSC antibody



Catalog Number: 111847

Product name

INSC antibody

IHC: 1:20-1:200

IF: 1:10-1:100

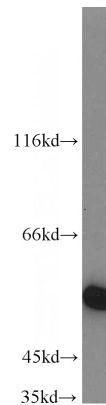
Specificity

Human, Mouse, Rat; other species not tested.

Antibody description

INSC Rabbit Polyclonal antibody. Positive WB detected in mouse liver tissue, mouse kidney tissue. Positive IF detected in HeLa cells. Positive IHC detected in human kidney tissue, human liver tissue. Observed molecular weight by Western-blot: 54kd

Validations



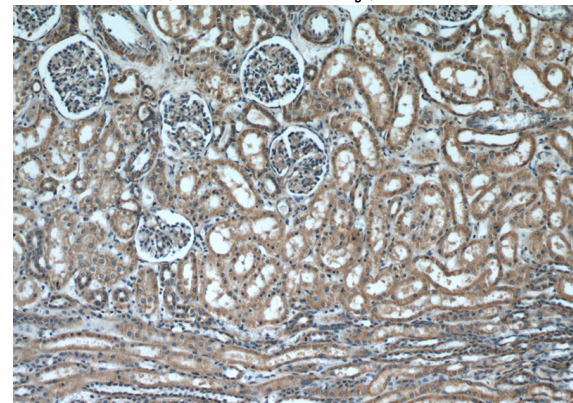
Preparation

This antibody was obtained by immunization of Peptide (Accession Number: NM_001031853). Purification method: Antigen affinity purified.

mouse liver tissue were subjected to SDS PAGE followed by western blot with Catalog No:111847(INSC antibody) at dilution of 1:1000

Formulation

PBS with 0.02% sodium azide and 50% glycerol pH 7.3.



Storage

Store at -20°C. DO NOT ALIQUOT

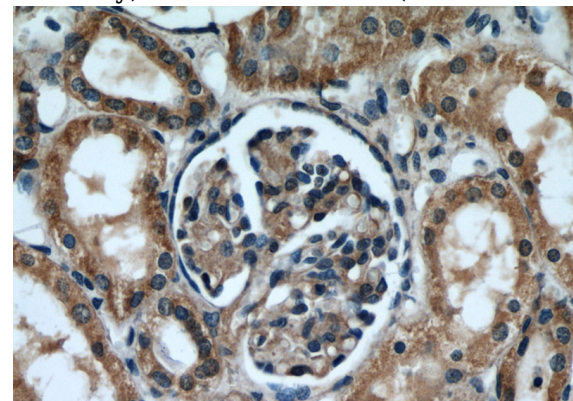
Clonality

Polyclonal

Immunohistochemical of paraffin-embedded human kidney using Catalog No:111847(INSC antibody) at dilution of 1:50 (under 10x lens)

Ig Type

Rabbit IgG



Applications

ELISA, WB, IHC, IF

Dilutions

Recommended Dilution:

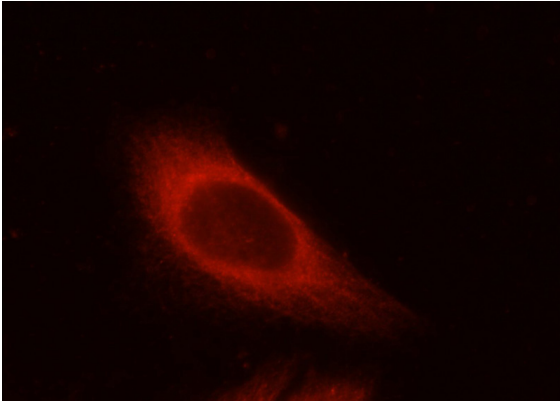
WB: 1:500-1:5000

Immunohistochemical of paraffin-embedded human kidney using Catalog No:111847(INSC

INSC antibody

Catalog Number: 111847

antibody) at dilution of 1:50 (under 40x lens)



Immunofluorescent analysis of HeLa cells using Catalog No:111847(INSC Antibody) at dilution of 1:25 and Rhodamine-Goat anti-Rabbit IgG