

General Information

Gene Name Synonym

Anaphase-promoting complex subunit 8; APC8;
Cyclosome subunit 8

Protein Construction

1-126 aa encoded by BC005258 was inserted into
PGEX-4T vector

Organism

Human

Expression Host

E. coli

QC Testing

Activity

Not tested.

Endotoxin

Please contact the lab for more information.

Stability

Aliquot and store at -20°C to -80°C for up to 6
months. Avoid freeze thaw cycles.

Formulation

PBS (58mM Na₂HPO₄, 17mM NaH₂PO₄, 68mM
NaCl, pH7.4).

Usage Guide

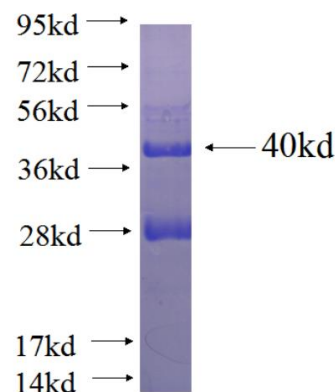
Storage

Store it under sterile conditions at -20°C to -80°C.
It is recommended that the protein be aliquoted
for optimal storage. Avoid repeated freeze-thaw
cycles.

Reconstitution

Reconstitute at 0.25 µg/µl in sterile water for
short-term storage. Reconstitution with 50%
glycerol solution is recommended for longer term
storage (see Stability and Storage for more
details). If a different concentration is needed for
your purposes please adjust the reconstitution
volume as required (please note: the ion
concentration of the final solution will vary
according to the volume used). Note: Centrifuge
vial before opening. When reconstituting, gently
pipet and wash down the sides of the vial to
ensure full recovery of the protein into solution.

SDS-PAGE



Recombinant human CDC23 SDS-PAGE