

Anti-TRIM8 antibody



Catalog Number: 175447

Product name

Anti-TRIM8 antibody

Specificity

Human, Mouse, Rat, Chicken, Dog, Horse, Sheep

Antibody description

Rabbit polyclonal antibody to TRIM8

Preparation

This antigen of this antibody was klh conjugated synthetic peptide derived from human gerp/trim8/rnf27 61-160/551

Formulation

Liquid, 0.01M TBS(pH7.4) with 1% BSA, 0.03% Proclin300 and 50% Glycerol.

Storage

Store at -20°C for one year. Avoid repeated freeze/thaw cycles. The lyophilized antibody is stable at room temperature for at least one month and for greater than a year when kept at -20°C. When reconstituted in sterile pH 7.4 0.01M PBS or diluent of antibody the antibody is stable for at least two weeks at 2-4°C.

Clonality

Polyclonal

Ig Type

Rabbit IgG

Applications

WB

Dilutions

WB:1:500-2000

Validations

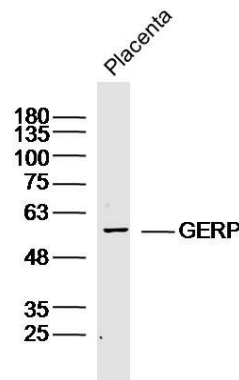
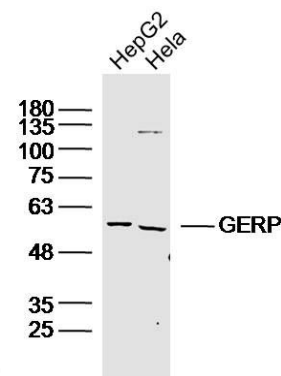


Fig1: Sample:; Placenta (Mouse) Lysate at 40 ug; Primary: Anti- GERP at 1/300 dilution; Secondary: IRDye800CW Goat Anti-Rabbit IgG at 1/20000 dilution; Predicted band size: 61kD; Observed



band size: 61kD

Fig2: Sample:; HepG2 Cell (Human) Lysate at 30 ug; HeLa Cell(Human)Lysate at 30 ug; Primary: Anti- GERP at 1/300 dilution; Secondary: IRDye800CW Goat Anti-Rabbit IgG at 1/20000 dilution; Predicted band size: 61kD; Observed band size: 61kD