

# HPDL antibody

Catalog Number: 111447

## Product name

HPDL antibody

IHC: 1:20-1:200

IF: 1:10-1:100

## Specificity

human; other species not tested.

## Antibody description

HPDL Rabbit Polyclonal antibody. Positive IF detected in HepG2. Positive IHC detected in human stomach. Positive WB detected in L02 cells. Observed molecular weight by Western-blot: 35-39kd

## Preparation

This antibody was obtained by immunization of HPDL recombinant protein (Accession Number: NM\_032756). Purification method: Antigen affinity purified.

## Formulation

PBS with 0.02% sodium azide and 50% glycerol pH 7.3.

## Storage

Store at -20°C. DO NOT ALIQUOT

## Clonality

Polyclonal

## Ig Type

Rabbit IgG

## Applications

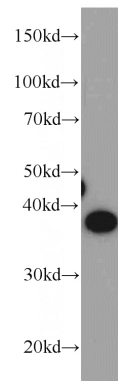
ELISA, WB, IHC, IF

## Dilutions

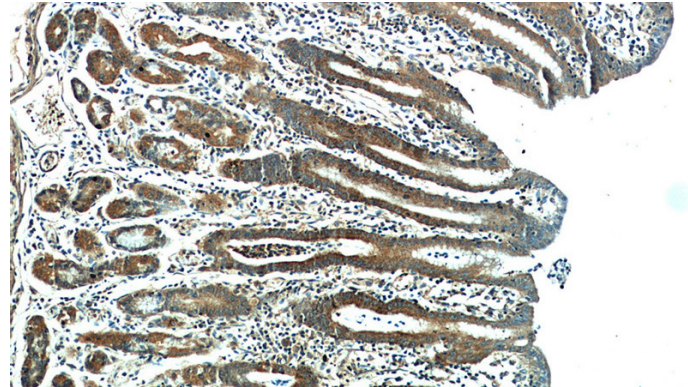
Recommended Dilution:

WB: 1:500-1:5000

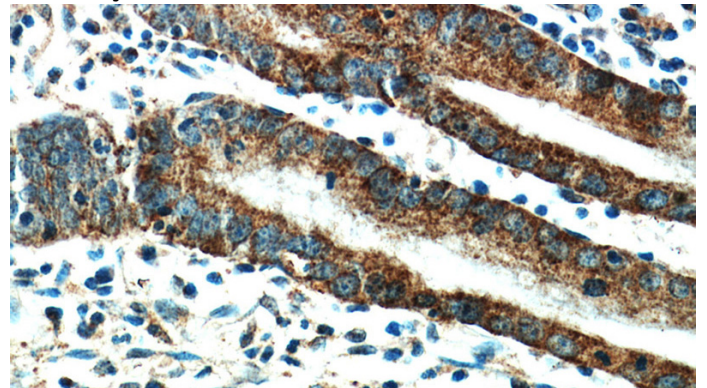
## Validations



L02 cells were subjected to SDS PAGE followed by western blot with Catalog No:111447(HPDL antibody) at dilution of 1:500



Immunohistochemical of paraffin-embedded human stomach using Catalog No:111447(HPDL antibody) at dilution of 1:50 (under 10x lens)



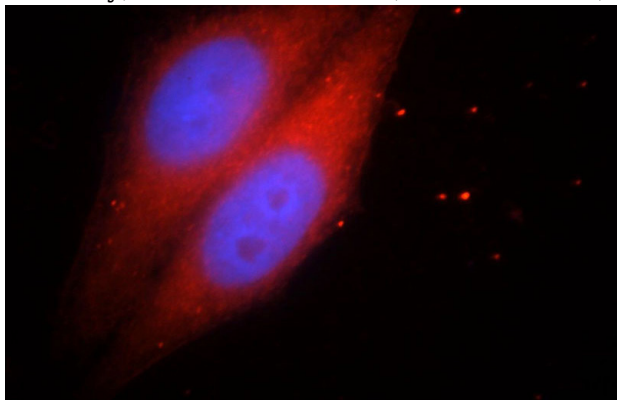
Immunohistochemical of paraffin-embedded human stomach using Catalog No:111447(HPDL

# HPDL antibody

Catalog Number: 111447

---

antibody) at dilution of 1:50 (under 40x lens)



Immunofluorescent analysis of HepG2 cells, using HPDL antibody Catalog No:111447 at 1:25 dilution and Rhodamine-labeled goat anti-rabbit IgG (red). Blue pseudocolor = DAPI (fluorescent DNA dye).