

# Anti-NR6A1 antibody



Catalog Number: 141447

## Product name

Anti-NR6A1 antibody

## Specificity

Human NR6A1

## Antibody description

Rabbit Polyclonal to Human NR6A1

## Preparation

Produced in rabbits immunized with a synthetic peptide corresponding to the center region of the Human NR6A1, and purified by antigen affinity chromatography.

## Formulation

0.2 µm filtered solution in PBS

## Storage

This antibody can be stored at 2°C-8°C for one month without detectable loss of activity. Antibody products are stable for twelve months from date of receipt when stored at -20°C to -80°C.

Preservative-Free.

Sodium azide is recommended to avoid contamination (final concentration 0.05%-0.1%). It is toxic to cells and should be disposed of properly. Avoid repeated freeze-thaw cycles.

## Clonality

Polyclonal

## Ig Type

Rabbit IgG

## Applications

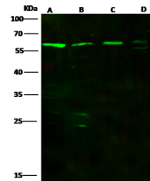
WB, ICC/IF, IF

## Dilutions

WB: 5-10 µg/ml

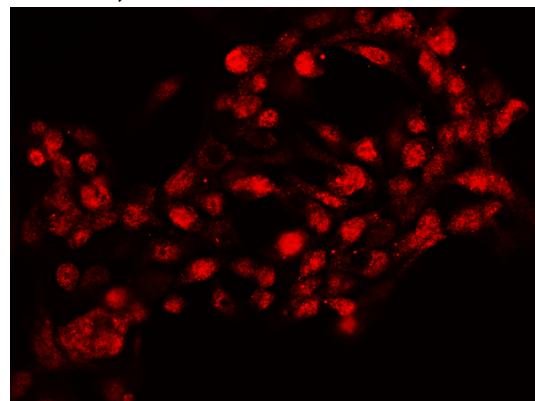
ICC/IF: 0.5-3 µg/mL

## Validations



Items	Lanes	A	B	C	D
Sample (whole cell lysate)		HEK293	MCF7	K562	Hela
Sample Volume (µg/lane)		30	30	30	30
Gel	13% SDS-PAGE reducing gel				
Recommended Concentration	5-10 µg/ml				
Secondary Antibody	DyLight 800-labeled Antibody to Rabbit IgG (H+L), at 1:5000 dilution.				
Explanation	Developed using Odyssey imaging system. Predicted band size : 54 kDa Observed band size : 60 kDa Additional bands at : 27 kDa and 23 kDa (We are unsure as to the identity of these extra bands.)				

NR6A1 Antibody, Rabbit PAb, Antigen Affinity Purified, Western blot



NR6A1 Antibody, Rabbit PAb, Antigen Affinity Purified, Immunofluorescence