

# MonoMethyl-Histone H4-R3 pAb



Catalog Number: 164047

## Product name

MonoMethyl-Histone H4-R3 pAb

IF 1:50 - 1:200

IP 1:50 - 1:200

## Specificity

Human, Mouse, Rat, Other (Wide Range)

## Antibody description

Polyclonal antibody to MonoMethyl-Histone H4-R3

## Preparation

Antigen: A synthetic peptide of human MonoMethyl-Histone H4-R3

## Formulation

PBS with 0.02% sodium azide, 50% glycerol, pH7.3.

## Storage

Store at -20°C. Avoid freeze / thaw cycles.

## Clonality

Polyclonal

## Ig Type

Rabbit IgG

## Applications

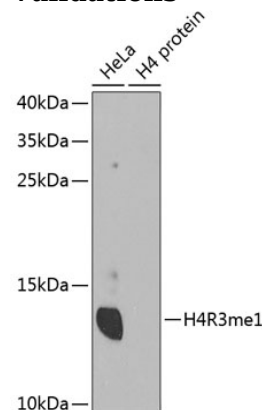
WB, IHC, IF, IP

## Dilutions

WB 1:500 - 1:2000

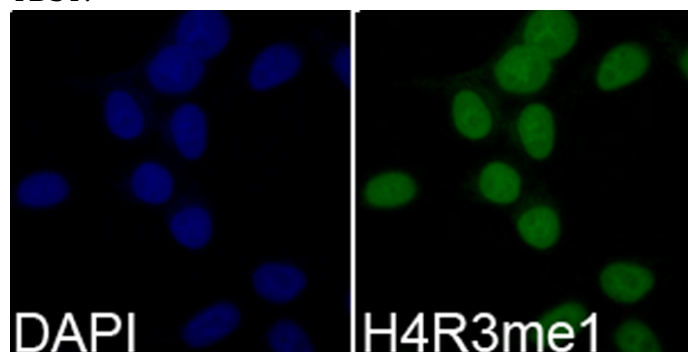
IHC 1:50 - 1:200

## Validations



Western blot - MonoMethyl-Histone H4-R3 pAb

Western blot analysis of extracts of various cell lines, using MonoMethyl-Histone H4-R3 antibody .Secondary antibody: HRP Goat Anti-Rabbit IgG (H+L) at 1:10000 dilution.Lysates/proteins: 25ug per lane.Blocking buffer: 3% nonfat dry milk in TBST.



Immunofluorescence - MonoMethyl-Histone H4-R3 pAb

Immunofluorescence analysis of 293T cells using MonoMethyl-Histone H4-R3 antibody . Blue: DAPI for nuclear staining.