

# Human RET (aa 658-1114, His & GST Tag) recombinant protein



Catalog Number: 500047

## General Information

### Gene Name Synonym

Cadherin family member 12; Proto-oncogene c-Ret; Soluble RET kinase fragment; Extracellular cell-membrane anchored RET cadherin 120 kDa fragment

### Protein Construction

A DNA sequence encoding the cytoplasmic domain of human RET (P07949-1) (His 658-Ser 1114) was fused with the N-terminal polyhistidine-tagged GST tag at the N-terminus.

### Organism

Human

### Expression Host

Baculovirus-Insect Cells

## QC Testing

### Activity

The specific activity was determined to be 17 nmol/min/mg using synthetic TRK-C-derived Peptide (R11-VYSTDYRLFNPS) as substrate.

### Purity

> 90 % as determined by SDS-PAGE

### Endotoxin

< 1.0 EU per µg of the protein as determined by the LAL method

### Stability

Samples are stable for up to twelve months from date of receipt at -70°C

### Predicted N terminal

Met

### Molecular Mass

The recombinant human RET (aa 658-1114)/GST chimera consists of 694 amino acids and has a calculated molecular mass of 76.7 kDa. It migrates as an approximately 70 kDa band in SDS-PAGE under reducing conditions.

### Formulation

Supplied as sterile 20mM Tris, 500mM NaCl, 10% gly, pH 8.0

1. 5 % trehalose and mannitol are added as protectants before lyophilization.

2. Please contact us for any concerns or special requirements.

## Usage Guide

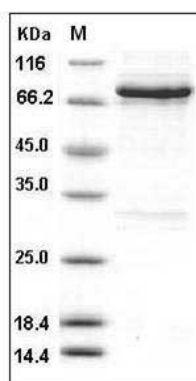
### Storage

Store it under sterile conditions at -20°C to -80°C. It is recommended that the protein be aliquoted for optimal storage. Avoid repeated freeze-thaw cycles.

### Reconstitution

Adding sterile water, prepare a stock solution of 0.25 mg/ml. Concentration is measured by UV-Vis.

### SDS-PAGE



Human RET Kinase Protein (aa 658-1114, His & GST Tag) SDS-PAGE