

# SMARCC1 Polyclonal Antibody



Catalog Number: 164737

## Product name

SMARCC1 Polyclonal Antibody

## Specificity

Human

## Antibody description

Polyclonal antibody to SMARCC1

## Preparation

Antigen: Recombinant fusion protein containing a sequence corresponding to amino acids 80-320 of human SMARCC1 (NP\_003065.3).

## Formulation

PBS with 0.02% sodium azide, 50% glycerol, pH7.3.

## Storage

Store at -20°C. Avoid freeze / thaw cycles.

## Clonality

Polyclonal

## Ig Type

Rabbit IgG

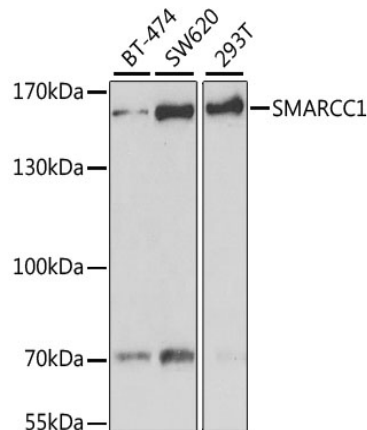
## Applications

WB, IHC, IP

## Dilutions

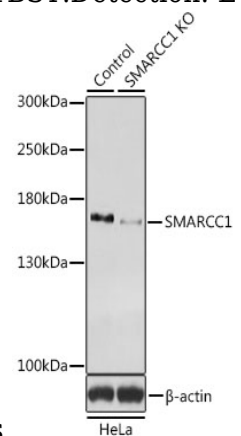
WB 1:500 - 1:2000  
IHC 1:50 - 1:200  
IP 1:50 - 1:200

## Validations



Western blot - SMARCC1 Polyclonal Antibody

Western blot analysis of extracts of various cell lines, using SMARCC1 antibody at 1:1000 dilution. Secondary antibody: HRP Goat Anti-Rabbit IgG (H+L) at 1:10000 dilution. Lysates/proteins: 25ug per lane. Blocking buffer: 3% nonfat dry milk in TBST. Detection: ECL Basic Kit. Exposure time: 120s.



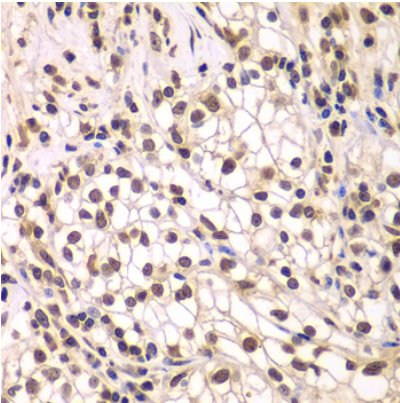
Western blot - SMARCC1 Polyclonal Antibody

Western blot analysis of extracts from normal (control) and SMARCC1 knockout HeLa cells, using SMARCC1 antibody at 1:1000 dilution. Secondary antibody: HRP Goat Anti-Rabbit IgG (H+L) at 1:10000 dilution. Lysates/proteins: 25ug per lane. Blocking buffer: 3% nonfat dry milk in TBST. Detection: ECL Basic Kit. Exposure time: 15s.

# SMARCC1 Polyclonal Antibody

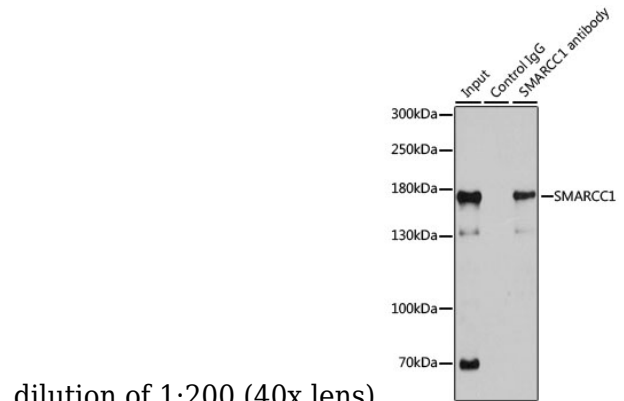


Catalog Number: 164737



## Immunohistochemistry - SMARCC1 Polyclonal Antibody

Immunohistochemistry of paraffin-embedded human kidney cancer using SMARCC1 antibody at



dilution of 1:200 (40x lens).

## Immunoprecipitation - SMARCC1 Polyclonal Antibody

Immunoprecipitation analysis of 200ug extracts of 293T cells using 1ug SMARCC1 antibody . Western blot was performed from the immunoprecipitate using SMARCC1 antibody at a dilution of 1:1000.