

MTA2 Polyclonal Antibody



Catalog Number: 163737

Product name

MTA2 Polyclonal Antibody

Specificity

Human, Mouse, Rat

Antibody description

Polyclonal antibody to MTA2

Preparation

Antigen: Recombinant fusion protein containing a sequence corresponding to amino acids 60-180 of human MTA2 (NP_004730.2).

Formulation

PBS with 0.02% sodium azide, 50% glycerol, pH7.3.

Storage

Store at -20°C. Avoid freeze / thaw cycles.

Clonality

Polyclonal

Ig Type

Rabbit IgG

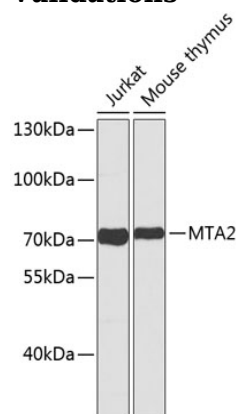
Applications

WB

Dilutions

WB 1:500 - 1:2000

Validations



Western blot - MTA2 Polyclonal Antibody

Western blot analysis of extracts of various cell lines, using MTA2 antibody .