

Anti-ACP1 antibody



Catalog Number: 142737

Product name

Anti-ACP1 antibody

Immunogen

[Human ACP1 / LMW-PTP \(GST Tag\) recombinant protein](#)

Specificity

Human ACP1 / LMW-PTP

Antibody description

Rabbit Polyclonal to Human ACP1

Preparation

Produced in rabbits immunized with purified, recombinant Human ACP1 / LMW-PTP . ACP1 / LMW-PTP specific IgG was purified by Human ACP1 / LMW-PTP affinity chromatography.

Formulation

0.2 μ m filtered solution in PBS

Storage

This antibody can be stored at 2°C-8°C for one month without detectable loss of activity. Antibody products are stable for twelve months from date of receipt when stored at -20°C to -80°C.

Preservative-Free.

Sodium azide is recommended to avoid contamination (final concentration 0.05%-0.1%). It is toxic to cells and should be disposed of properly. Avoid repeated freeze-thaw cycles.

Clonality

Polyclonal

Ig Type

Rabbit IgG

Applications

WB, ELISA, IHC-P, ICC/IF, IF, IP

Dilutions

WB: 1-5 μ g/ml

ELISA: 0.1-0.2 μ g/mL

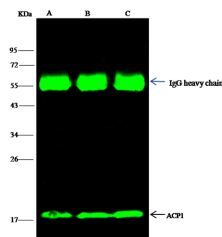
This antibody can be used at 0.1-0.2 μ g/mL with the appropriate secondary reagents to detect Human ACP1 / LMW-PTP.

IHC-P: 0.1-2 μ g/mL

ICC/IF: 0.5-3 μ g/mL

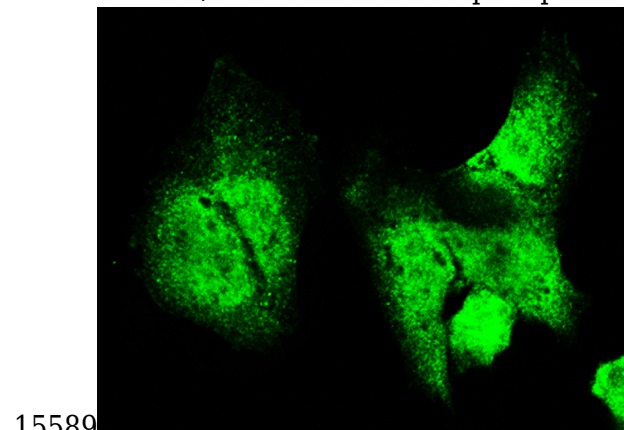
IP: 1-4 μ l/mg of lysate

Validations



Items	Lanes	A	B	C
Sample (whole cell lysate)		Jurkat	HepG2	HeLa
Sample quantity		0.5 mg		
IP antibody quantity		4 μ l.		
Protein G agarose		15 μ l of 50% Protein G Agarose		
Gel		13% SDS-PAGE reducing gel		
Primary antibody		GST-Thrombin-ACP1 antibody at 10 μ g/ml		
Secondary antibody		DyLight 800-labeled antibody to rabbit IgG (1:11), at 1:5000 dilution		

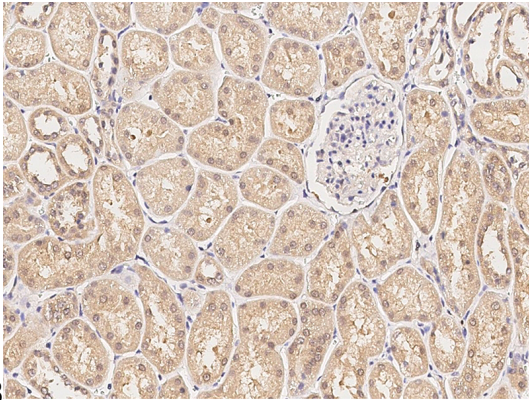
Human ACP1 / LMW-PTP Immunoprecipitation(IP)



Human ACP1 / LMW-PTP Immunofluorescence(IF)

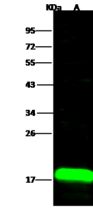
Anti-ACP1 antibody

Catalog Number: 142737



15588

Human ACP1 / LMW-PTP
Immunohistochemistry(IHC) 15587



Items	Lanes
Sample (whole cell lysate)	A Jurkat
Sample Volume (µg/lane)	30
Cell	13% SDS-PAGE reducing gel
Recommended Concentration	1-5 µg/ml
Secondary Antibody	Dylight 800-labeled Antibody to Rabbit IgG (H+), at 1:5000 dilution.
Developed using Odyssey imaging system.	
Explanation	Predicted band size : 18 kDa Observed band size : 18 kDa

Human ACP1 / LMW-PTP Western blot (WB)
15586