

# ZIC3 Polyclonal Antibody



Catalog Number: 161737

## Product name

ZIC3 Polyclonal Antibody

## Specificity

Human

## Antibody description

Polyclonal antibody to ZIC3

## Preparation

Antigen: A synthetic peptide of human ZIC3

## Formulation

PBS with 0.02% sodium azide, pH7.3.

## Storage

Store at 4°C. Avoid freeze / thaw cycles.

## Clonality

Polyclonal

## Ig Type

Rabbit IgG

## Applications

WB, IHC, FC

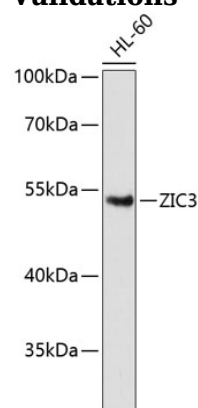
## Dilutions

WB 1:500 - 1:1000

IHC 1:50 - 1:100

FC 1:20 - 1:50

## Validations



Western blot - ZIC3 Polyclonal Antibody

Western blot analysis of extracts of HL-60 cells, using ZIC3 antibody. Secondary antibody: HRP Goat Anti-Rabbit IgG (H+L) at 1:10000 dilution. Lysates/proteins: 25ug per lane. Blocking buffer: 3% nonfat dry milk in TBST.