

Anti-C Reactive Protein (6D1) Mouse antibody



Catalog Number: 168337

Product name

Monoclonal

Anti-C Reactive Protein (6D1) Mouse antibody

Ig Type

Specificity

Mouse IgG2b

Human

Applications

Antibody description

ELISA

C Reactive Protein (6D1) Mouse monoclonal antibody

Validations

Preparation

Antigen: Synthetic peptide.

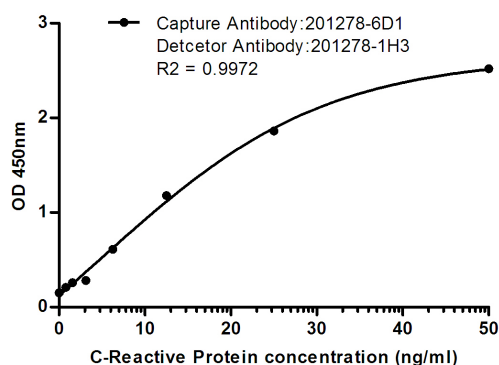
Formulation

Purified mouse monoclonal antibody in PBS(pH 7.4) containing with 0.03% Proclin300.

Storage

Store at 4°C short term. Avoid freeze / thaw cycle.

Clonality



sELISA standard Curve for C-Reactive Protein: Capture Antibody Mouse mAb(168337) to C-Reactive Protein at 2ug/ml and 201278-1H3 was used for detecting.