

SLC25A46 antibody



Catalog Number: 115337

Product name

SLC25A46 antibody

Specificity

Human, Mouse, Rat; other species not tested.

Antibody description

SLC25A46 Rabbit Polyclonal antibody. Positive IHC detected in human medulloblastoma tissue. Positive WB detected in MCF-7 cells, human brain tissue. Observed molecular weight by Western blot: 46 kDa

Preparation

This antibody was obtained by immunization of SLC25A46 recombinant protein (Accession Number: NM_138773). Purification method: Antigen affinity purified.

Formulation

PBS with 0.1% sodium azide and 50% glycerol pH 7.3.

Storage

Store at -20°C. DO NOT ALIQUOT

Clonality

Polyclonal

Ig Type

Rabbit IgG

Applications

ELISA, IHC, WB

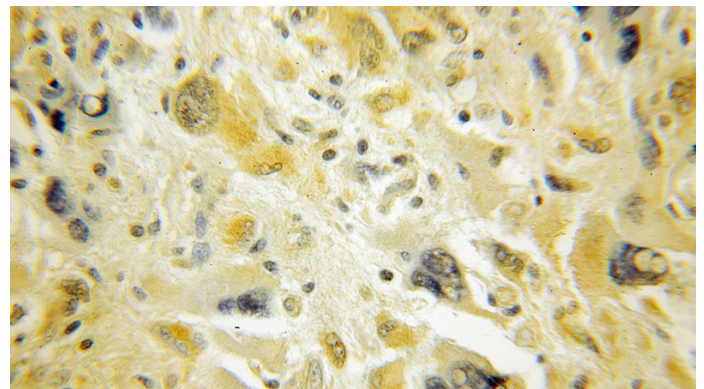
Dilutions

Recommended Dilution:

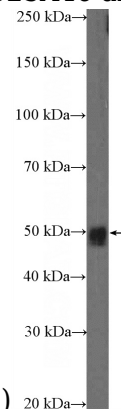
WB: 1:200-1:2000

IHC: 1:20-1:200

Validations



Immunohistochemical of paraffin-embedded human medulloblastoma using Catalog No:115337(SLC25A46 antibody) at dilution of 1:50



(under 10x lens)

MCF-7 cells were subjected to SDS PAGE followed by western blot with Catalog No:115337(SLC25A46 Antibody) at dilution of 1:600