

Anti-Clec5a antibody



Catalog Number: 175337

Product name

Anti-Clec5a antibody

Specificity

Human, Mouse, Rat, Pig, Cow, Horse, Rabbit

Antibody description

Rabbit polyclonal antibody to Clec5a

Preparation

This antigen of this antibody was klh conjugated synthetic peptide derived from mouse clec5a 101-190/190

Formulation

Liquid, 0.01M TBS(pH7.4) with 1% BSA, 0.03% Proclin300 and 50% Glycerol.

Storage

Store at -20°C for one year. Avoid repeated freeze/thaw cycles. The lyophilized antibody is stable at room temperature for at least one month and for greater than a year when kept at -20°C. When reconstituted in sterile pH 7.4 0.01M PBS or diluent of antibody the antibody is stable for at least two weeks at 2-4°C.

Clonality

Polyclonal

Ig Type

Rabbit IgG

Applications

WB, IHC-P

Dilutions

WB:1:500-2000

IHC-P:1:400-800

Validations

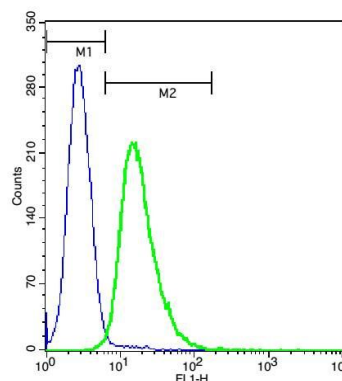
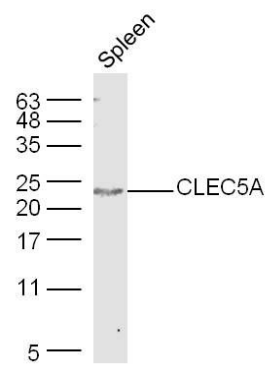


Fig1: Cell: U937.; Concentration: 1:100.; Incubation: 40 minutes, room temperature.; Host/Blank: U937 cells.; Flow cytometric analysis of Rabbit Anti-CLEC5A antibody (green) compared with control in the absence of primary antibody (blue) followed by U937 cells.; secondary antibody: Goat Anti-rabbit IgG/FITC antibody



(bs-0295G-FITC)

Fig2: Sample: Spleen (Mouse) Lysate at 40 ug; Primary: Anti-CLEC5A at 1/300 dilution; Secondary: IRDye800CW Goat Anti-Rabbit IgG at 1/20000 dilution; Predicted band size: 22 kD; Observed band size: 22 kD