

# LRRC8C antibody



Catalog Number: 112337

## Product name

LRRC8C antibody

## Specificity

Human, Mouse, Rat; other species not tested.

## Antibody description

LRRC8C Rabbit Polyclonal antibody. Positive IHC detected in human heart.

## Preparation

This antibody was obtained by immunization of LRRC8C recombinant protein (Accession Number: XM\_011542282). Purification method: Antigen affinity purified.

## Formulation

PBS with 0.02% sodium azide and 50% glycerol pH 7.3.

## Storage

Store at -20°C. DO NOT ALIQUOT

## Clonality

Polyclonal

## Ig Type

Rabbit IgG

## Applications

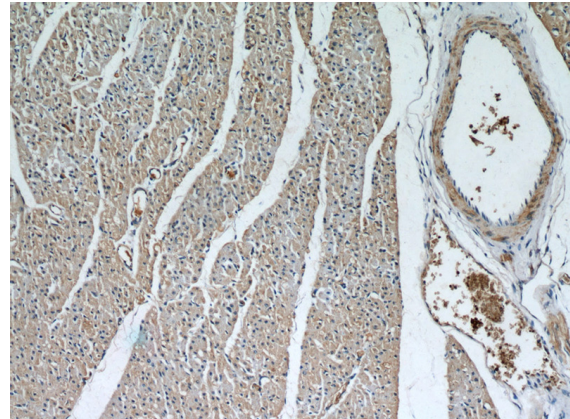
ELISA, IF, IHC

## Dilutions

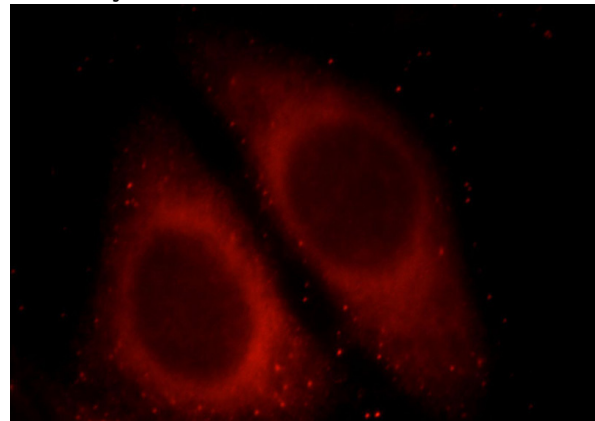
Recommended Dilution:

IHC: 1:20-1:200

## Validations



Immunohistochemical of paraffin-embedded human heart using Catalog No:112337(LRRC8C antibody) at dilution of 1:50 (under 10x lens)



Immunofluorescent analysis of HepG2 cells, using LRRC8C antibody Catalog No:112337 at 1:25 dilution and Rhodamine-labeled goat anti-rabbit IgG (red).