

Canine IL-2 (147 Cys/Ser) recombinant protein



Catalog Number: 500337

General Information

Gene Name Synonym

T-cell growth factor

Protein Construction

A DNA sequence encoding the mature form of canine IL2 (Q29416) (Ala 21-Thr 155, 147Cys/Ser) was expressed, with an initial Met at the N-terminus.

Organism

Canine

Expression Host

E. coli

QC Testing

Activity

1. Measured by its binding ability in a functional ELISA.
2. Immobilized recombinant Canine IL2 (cat:500337) at 10 µg/mL can bind recombinant human IL2Ra-Fc (Cat:503136) with a linear range of 0.3125-20 µg/ml.

Purity

> 95 % as determined by SDS-PAGE

Endotoxin

Please contact us for more information.

Stability

Samples are stable for up to twelve months from date of receipt at -70°C

Predicted N terminal

Met

Molecular Mass

The recombinant canine IL2 consists of 136 amino acids and has a calculated molecular mass of 15.6 kDa. In SDS-PAGE under reducing conditions, it migrates as an approximately 15 kDa band.

Formulation

- Lyophilized from sterile PBS, pH 7.4
1. 5 % trehalose and mannitol are added as protectants before lyophilization.
 2. Please contact us for any concerns or special requirements.

Usage Guide

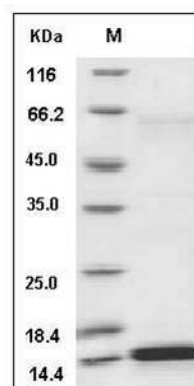
Storage

Store it under sterile conditions at -20°C to -80°C. It is recommended that the protein be aliquoted for optimal storage. Avoid repeated freeze-thaw cycles.

Reconstitution

Adding sterile water, prepare a stock solution of 0.25 mg/ml. Concentration is measured by UV-Vis.

SDS-PAGE



Canine Interleukin-2 / IL-2 Protein (147 Cys/Ser) SDS-PAGE