

PSTPIP1 Polyclonal Antibody

Catalog Number: 166637

Product name

PSTPIP1 Polyclonal Antibody

Specificity

Human, Mouse, Rat

Antibody description

Polyclonal antibody to PSTPIP1

Preparation

Antigen: Recombinant fusion protein containing a sequence corresponding to amino acids 157-416 of human PSTPIP1 (NP_003969.2).

Formulation

PBS with 0.02% sodium azide, 50% glycerol, pH7.3.

Storage

Store at -20°C. Avoid freeze / thaw cycles.

Clonality

Polyclonal

Ig Type

Rabbit IgG

Applications

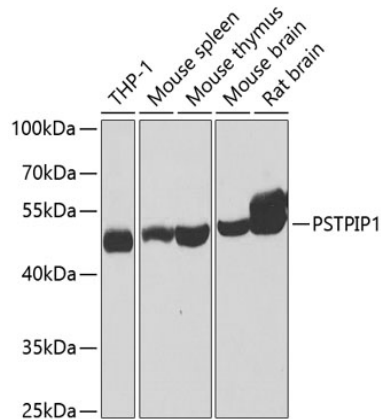
WB, IHC

Dilutions

WB 1:500 - 1:2000

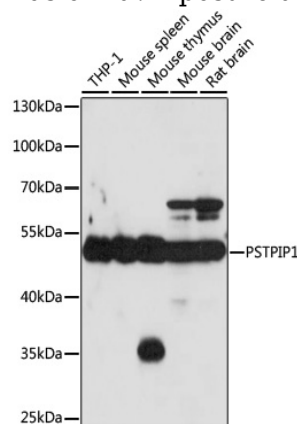
IHC 1:50 - 1:200

Validations



Western blot - PSTPIP1 Polyclonal Antibody

Western blot analysis of extracts of various cell lines, using PSTPIP1 antibody at 1:1000 dilution. Secondary antibody: HRP Goat Anti-Rabbit IgG (H+L) at 1:10000 dilution. Lysates/proteins: 25ug per lane. Blocking buffer: 3% nonfat dry milk in TBST. Detection: ECL Basic Kit. Exposure time: 40s.



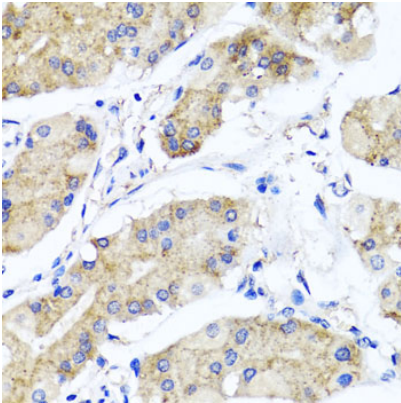
Western blot - PSTPIP1 Polyclonal Antibody

Western blot analysis of extracts of various cells, using PSTPIP1 antibody at 1:1000 dilution ratio through one-step method. Secondary antibody: HRP Goat Anti-Rabbit IgG (H+L) at 1:10000 dilution. Lysates/proteins: 25ug per lane. Blocking buffer: 3% nonfat dry milk in TBST. Detection: ECL Basic Kit. Exposure time: 90s.

PSTPIP1 Polyclonal Antibody

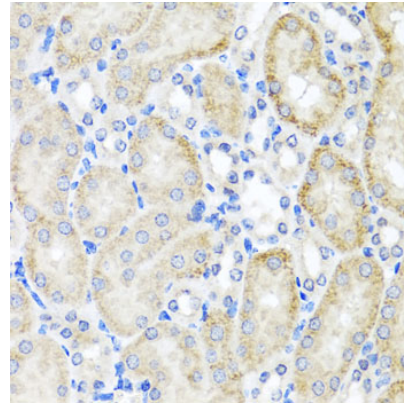


Catalog Number: 166637



Immunohistochemistry - PSTPIP1 Polyclonal Antibody

Immunohistochemistry of paraffin-embedded human stomach using PSTPIP1 antibody at dilution of 1:100 (40x lens).



Immunohistochemistry - PSTPIP1 Polyclonal Antibody

Immunohistochemistry of paraffin-embedded mouse kidney using PSTPIP1 antibody at dilution of 1:100 (40x lens).