

DDB1 antibody

Catalog Number: 107237

Product name

DDB1 antibody

WB: 1:500-1:5000

IHC: 1:20-1:200

Specificity

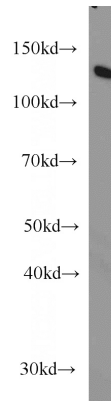
Human, Mouse, Rat; other species not tested.

IF: 1:10-1:100

Antibody description

DDB1 Mouse Monoclonal antibody. Positive IHC detected in human cervical cancer tissue, human testis tissue. Positive IF detected in HeLa cells, MCF-7 cells. Positive WB detected in HeLa cells, A549 cells, MCF7 cells, NIH/3T3 cells, RAW264.7 cells. Observed molecular weight by Western-blot: 127 kDa

Validations



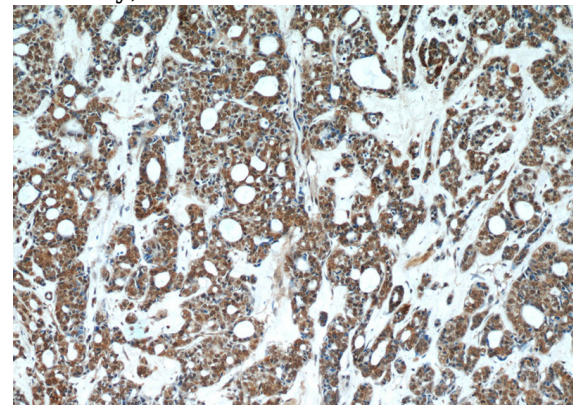
Preparation

This antibody was obtained by immunization of DDB1 recombinant protein (Accession Number: NM_001923). Purification method: Protein A purified.

HeLa cells were subjected to SDS PAGE followed by western blot with Catalog No:107237(DDB1 antibody) at dilution of 1:1000

Formulation

PBS with 0.02% sodium azide and 50% glycerol pH 7.3.



Storage

Store at -20°C. DO NOT ALIQUOT

Clonality

Monoclonal

Immunohistochemical of paraffin-embedded human cervical cancer using Catalog No:107237(DDB1 antibody) at dilution of 1:50 (under 10x lens)

Ig Type

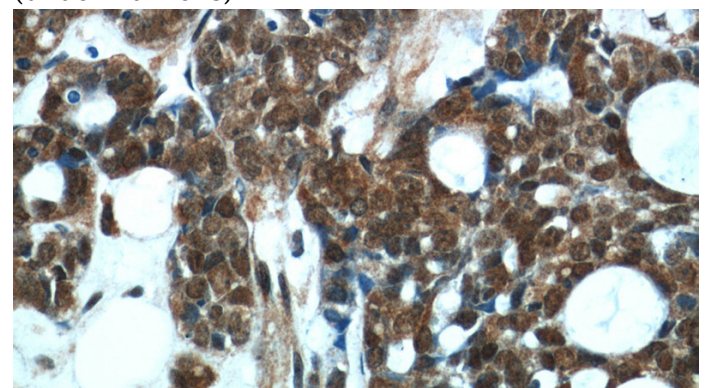
Mouse IgG2b

Applications

ELISA, WB, IHC, IF

Dilutions

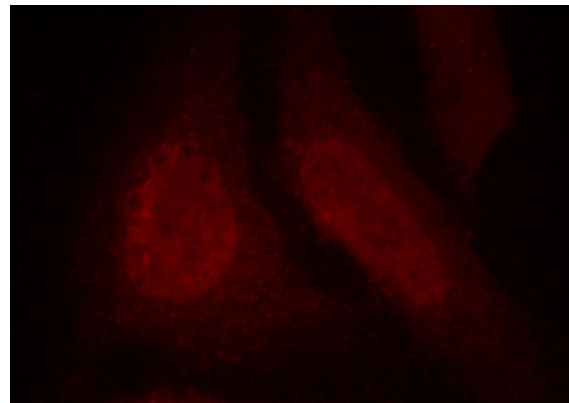
Recommended Dilution:



DDB1 antibody

Catalog Number: 107237

Immunohistochemical of paraffin-embedded human cervical cancer using Catalog No:107237(DDB1 antibody) at dilution of 1:50 (under 40x lens)



Immunofluorescent analysis of HeLa cells, using DDB1 antibody Catalog No: at 1:25 dilution and Rhodamine-labeled goat anti-mouse IgG (red).