

# SIPA1L1 antibody

Catalog Number: 115237

## Product name

SIPA1L1 antibody

## Specificity

Human, Mouse; other species not tested.

## Antibody description

SIPA1L1 Rabbit Polyclonal antibody. Positive WB detected in mouse brain tissue. Positive IP detected in mouse brain tissue. Observed molecular weight by Western-blot: 200 kDa

## Preparation

This antibody was obtained by immunization of SIPA1L1 recombinant protein (Accession Number: XM\_017021185). Purification method: Antigen affinity purified.

## Formulation

PBS with 0.1% sodium azide and 50% glycerol pH 7.3.

## Storage

Store at -20°C. DO NOT ALIQUOT

## Clonality

Polyclonal

## Ig Type

Rabbit IgG

## Applications

ELISA, WB, IP

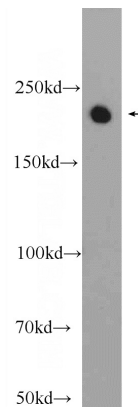
## Dilutions

Recommended Dilution:

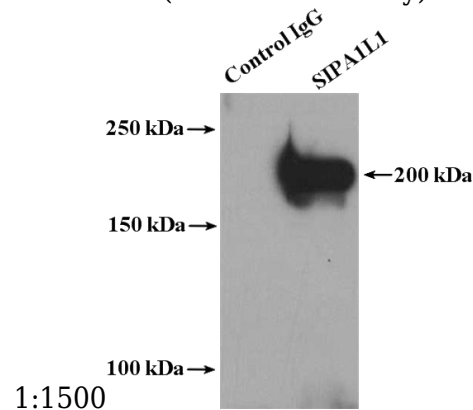
WB: 1:500-1:5000

IP: 1:500-1:5000

## Validations



mouse brain tissue were subjected to SDS PAGE followed by western blot with Catalog No:115237(SIPA1L1 Antibody) at dilution of



IP Result of anti-SIPA1L1 (IP:Catalog No:115237, 4ug; Detection:Catalog No:115237 1:1500) with mouse brain tissue lysate 4000ug.