

PRPS1 antibody

Catalog Number: 114237

Product name

PRPS1 antibody

Specificity

Human, Mouse, Rat; other species not tested.

Antibody description

PRPS1 Rabbit Polyclonal antibody. Positive IP detected in HeLa cells. Positive WB detected in Jurkat cells, HEK-293 cells, HeLa cells, mouse liver tissue, mouse spleen tissue, rat spleen tissue. Positive IF detected in HepG2 cells. Positive IHC detected in human testis tissue, human spleen tissue. Observed molecular weight by Western-blot: 35 kDa

Preparation

This antibody was obtained by immunization of PRPS1 recombinant protein (Accession Number: NM_002764). Purification method: Antigen affinity purified.

Formulation

PBS with 0.02% sodium azide and 50% glycerol pH 7.3.

Storage

Store at -20°C. DO NOT ALIQUOT

Clonality

Polyclonal

Ig Type

Rabbit IgG

Applications

ELISA, IHC, IF, WB, IP

Dilutions

Recommended Dilution:

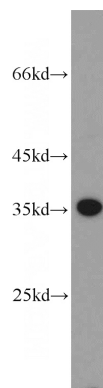
WB: 1:200-1:1000

IP: 1:200-1:1000

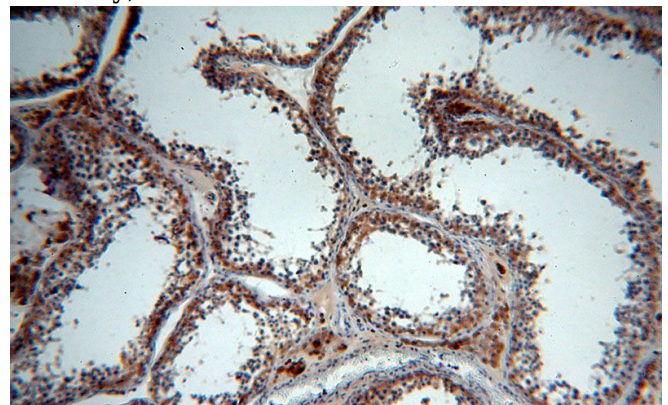
IHC: 1:20-1:200

IF: 1:10-1:100

Validations



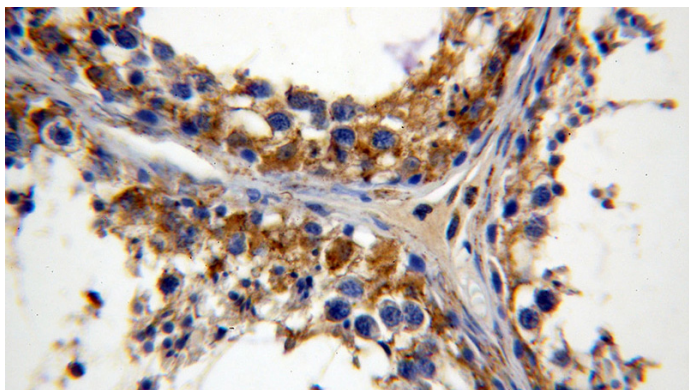
Jurkat cells were subjected to SDS PAGE followed by western blot with Catalog No:114237 (PRPS1 antibody) at dilution of 1:400



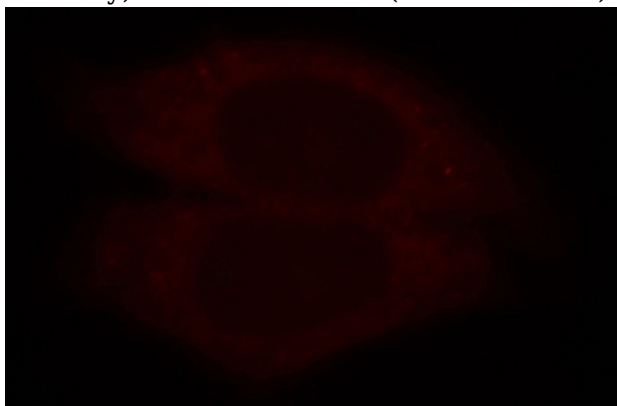
Immunohistochemical of paraffin-embedded human testis using Catalog No:114237 (PRPS1 antibody) at dilution of 1:50 (under 10x lens)

PRPS1 antibody

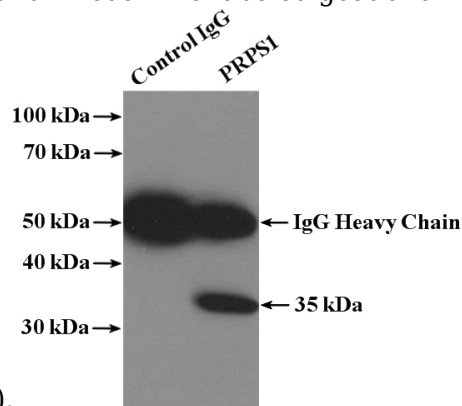
Catalog Number: 114237



Immunohistochemical of paraffin-embedded human testis using Catalog No:114237(PRPS1 antibody) at dilution of 1:50 (under 40x lens)



Immunofluorescent analysis of HepG2 cells, using PRPS1 antibody Catalog No:114237 at 1:25 dilution and Rhodamine-labeled goat anti-rabbit



IgG (red).

IP Result of anti-PRPS1 (IP:Catalog No:114237, 4ug; Detection:Catalog No:114237 1:100) with HeLa cells lysate 2600ug.