

# Rat Cathepsin E/CTSE (His Tag) recombinant protein



Catalog Number: 502237

## General Information

### Protein Construction

A DNA sequence encoding the rat Ctse (AAH62002.1) (Met1-Pro398) was expressed with a polyhistidine tag at the C-terminus.

### Organism

Rat

### Expression Host

Human Cells

## QC Testing

### Purity

> 90 % as determined by SDS-PAGE.

### Endotoxin

<1.0 EU per  $\mu\text{g}$  protein as determined by the LAL method.

### Stability

Samples are stable for up to twelve months from date of receipt at  $-70^{\circ}\text{C}$

### Predicted N terminal

Val 22

### Molecular Mass

The recombinant rat Ctse consists 388 amino

acids and predicts a molecular mass of 42.1 kDa.

### Formulation

Lyophilized from sterile 12.5 mM MES, 75 mM NaCl, 50 % glycerol, pH 6.5.

1. 5 % trehalose and mannitol are added as protectants before lyophilization.

2. Please contact us for any concerns or special requirements.

## Usage Guide

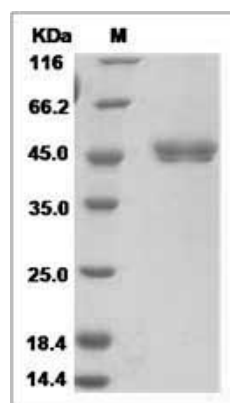
### Storage

Store it under sterile conditions at  $-20^{\circ}\text{C}$  to  $-80^{\circ}\text{C}$ . It is recommended that the protein be aliquoted for optimal storage. Avoid repeated freeze-thaw cycles.

### Reconstitution

Adding sterile water, prepare a stock solution of 0.25 mg/ml. Concentration is measured by UV-Vis.

### SDS-PAGE



Rat Cathepsin E / CTSE Protein (His Tag)