

# GTF2IRD1 antibody



Catalog Number: 111237

## Product name

GTF2IRD1 antibody

## Specificity

Human, Mouse, Rat; other species not tested.

## Antibody description

GTF2IRD1 Rabbit Polyclonal antibody. Positive IP detected in mouse liver tissue. Positive WB detected in HeLa cells, mouse brain tissue, mouse kidney tissue, mouse liver tissue. Positive IHC detected in human heart tissue, human brain tissue, human kidney tissue, human liver tissue, human lung tissue, human ovary tissue, human placenta tissue, human skin tissue, human spleen tissue, human testis tissue. Observed molecular weight by Western-blot: 145 kDa, 120 kDa

## Preparation

This antibody was obtained by immunization of GTF2IRD1 recombinant protein (Accession Number: XM\_047421063). Purification method: Antigen affinity purified.

## Formulation

PBS with 0.02% sodium azide and 50% glycerol pH 7.3.

## Storage

Store at -20°C. DO NOT ALIQUOT

## Clonality

Polyclonal

## Ig Type

Rabbit IgG

## Applications

ELISA, WB, IHC, IP

## Dilutions

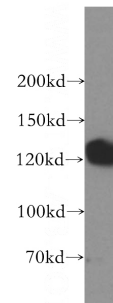
Recommended Dilution:

WB: 1:500-1:5000

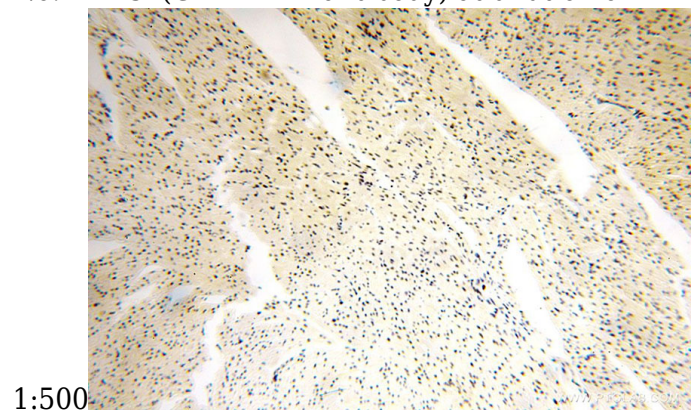
IP: 1:200-1:2000

IHC: 1:20-1:200

## Validations



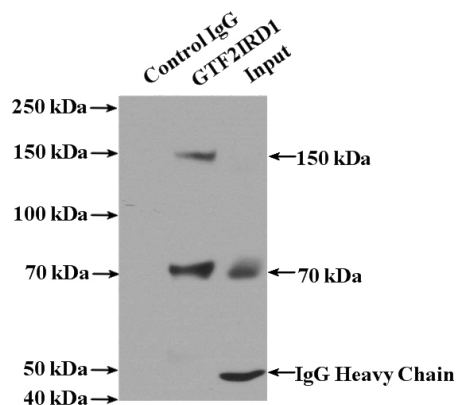
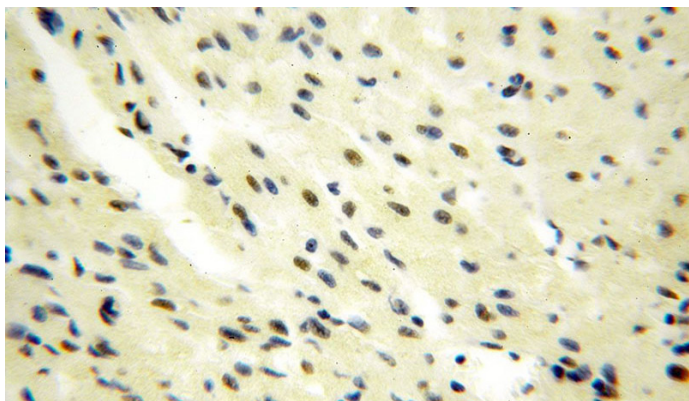
HeLa cells were subjected to SDS PAGE followed by western blot with Catalog No:111237(GTF2IRD1 antibody) at dilution of



Immunohistochemical of paraffin-embedded human heart using Catalog No:111237(GTF2IRD1 antibody) at dilution of 1:100 (under 10x lens)

# GTF2IRD1 antibody

Catalog Number: 111237



Immunohistochemical of paraffin-embedded human heart using Catalog No:111237(GTF2IRD1 antibody) at dilution of 1:100 (under 40x lens)

IP Result of anti-GTF2IRD1 (IP:Catalog No:111237, 4ug; Detection:Catalog No:111237 1:500) with mouse liver tissue lysate 4000ug.