

Emerin antibody

Catalog Number: 110237

Product name

Emerin antibody

Specificity

Human, Mouse; other species not tested.

Antibody description

Emerin Rabbit Polyclonal antibody. Positive IF detected in HeLa cells, A431 cells, MCF-7 cells. Positive FC detected in HEK-293T cells. Positive IP detected in mouse skeletal muscle tissue. Positive WB detected in HeLa cells, A431 cells, COLO 320 cells, HEK-293 cells, HepG2 cells, Jurkat cells, MCF7 cells. Observed molecular weight by Western-blot: 35kd

Preparation

This antibody was obtained by immunization of Emerin recombinant protein (Accession Number: NM_000117). Purification method: Antigen affinity purified.

Formulation

PBS with 0.1% sodium azide and 50% glycerol pH 7.3.

Storage

Store at -20°C. DO NOT ALIQUOT

Clonality

Polyclonal

Ig Type

Rabbit IgG

Applications

ELISA, WB, IP, IF, FC

Dilutions

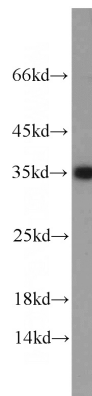
Recommended Dilution:

WB: 1:500-1:5000

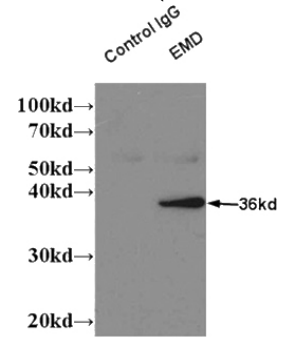
IP: 1:500-1:5000

IF: 1:10-1:100

Validations

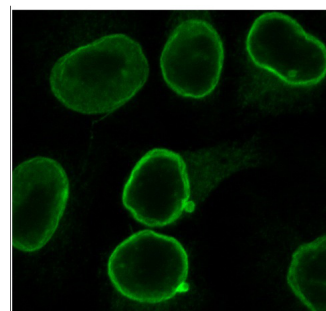


HeLa cells were subjected to SDS PAGE followed by western blot with Catalog No:110237(EMD



antibody) at dilution of 1:1000

IP result of EMD antibody (Catalog No:110237 for IP and Detection) with mouse skeletal muscle tissue lysate.

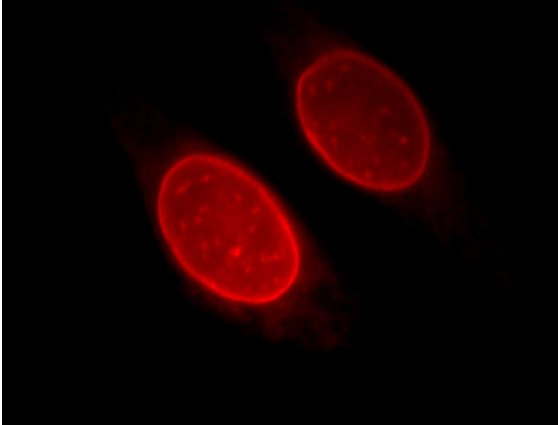


IF
HeLa cells were fixed and permeabilized with Triton.
1:300
goat-anti-rabbit ALEXA 488
Nuclear Envelope Stain

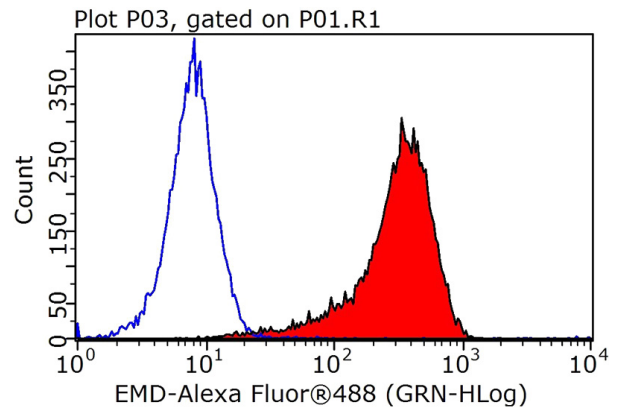
Emerin antibody

Catalog Number: 110237

IF result of anti-EMD(Catalog No:110237) in Hela cell by Dr. Ralph Kehlenbach.



Immunofluorescent analysis of Hela cells, using EMD antibody Catalog No:110237 at 1:25 dilution and Rhodamine-labeled goat anti-rabbit IgG (red).



1X10⁶ HEK-293T cells were stained with 0.2ug EMD antibody (Catalog No:110237, red) and control antibody (blue). Fixed with 90% MeOH blocked with 3% BSA (30 min). Alexa Fluor 488-conjugated AffiniPure Goat Anti-Rabbit IgG(H+L) with dilution 1:1000.