

Anti-RPA32/RPA2 Rabbit antibody



Catalog Number: 168937

Product name

Rabbit IgG

Anti-RPA32/RPA2 Rabbit antibody

Applications

Specificity

WB, IHC-P, IP

Human, Mouse, Rat

Dilutions

Antibody description

WB: 1/1000-1/2000

RPA32/RPA2 Rabbit monoclonal antibody

IHC: 1/50-1/200

Preparation

IP: 1/20

Antigen: A synthetic peptide of human RPA32/RPA2

Validations

Formulation

50nM Tris-Glycine(pH 7.4), 0.15M NaCl, 40%Glycerol, 0.01% sodium azide and 0.05% BSA.

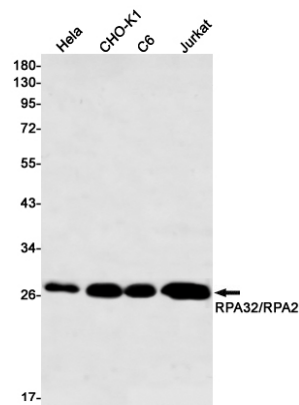
Storage

Store at 4°C short term. Store at -20°C long term. Avoid freeze / thaw cycle.

Clonality

Monoclonal

Ig Type



Western blot detection of RPA32/RPA2 in HeLa, CHO-K1, C6, Jurkat cell lysates using RPA32/RPA2 Rabbit mAb(1:500 diluted). Predicted band size:29kDa. Observed band size:29kDa.