

ZCRB1 antibody



Catalog Number: 116937

Product name

ZCRB1 antibody

Specificity

Human, Mouse; other species not tested.

Antibody description

ZCRB1 Rabbit Polyclonal antibody. Positive WB detected in mouse testis tissue, SMMC-7721 cells. Positive IF detected in HepG2 cells. Observed molecular weight by Western-blot: 25-30 kDa

Preparation

This antibody was obtained by immunization of ZCRB1 recombinant protein (Accession Number: NM_033114). Purification method: Antigen affinity purified.

Formulation

PBS with 0.1% sodium azide and 50% glycerol pH 7.3.

Storage

Store at -20°C. DO NOT ALIQUOT

Clonality

Polyclonal

Ig Type

Rabbit IgG

Applications

ELISA, WB, IF

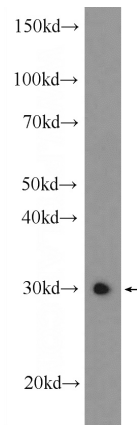
Dilutions

Recommended Dilution:

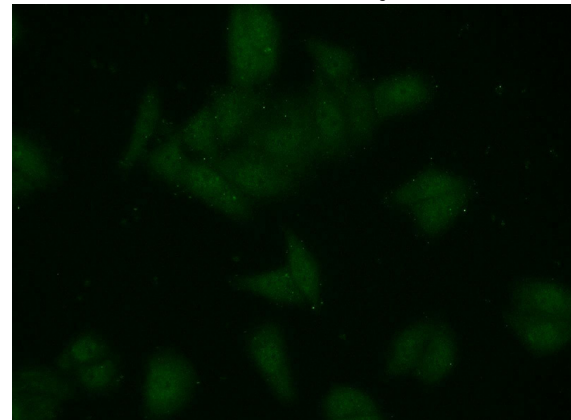
WB: 1:200-1:2000

IF: 1:20-1:200

Validations



mouse testis tissue were subjected to SDS PAGE followed by western blot with Catalog No:116937(ZCRB1 Antibody) at dilution of 1:600



Immunofluorescent analysis of HepG2 cells using Catalog No:116937(ZCRB1 Antibody) at dilution of 1:50 and Alexa Fluor 488-conjugated AffiniPure Goat Anti-Rabbit IgG(H+L)