

# GEM antibody

Catalog Number: 110937

## Product name

GEM antibody

## Specificity

Human, Mouse, Rat; other species not tested.

## Antibody description

GEM Rabbit Polyclonal antibody. Positive WB detected in Jurkat cells, human kidney tissue, mouse kidney tissue. Positive IP detected in mouse kidney tissue. Observed molecular weight by Western-blot: 34 kDa

## Preparation

This antibody was obtained by immunization of GEM recombinant protein (Accession Number: NM\_181702). Purification method: Antigen affinity purified.

## Formulation

PBS with 0.02% sodium azide and 50% glycerol pH 7.3.

## Storage

Store at -20°C. DO NOT ALIQUOT

## Clonality

Polyclonal

## Ig Type

Rabbit IgG

## Applications

ELISA, WB, IP

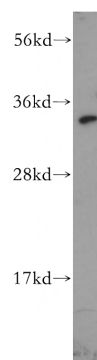
## Dilutions

Recommended Dilution:

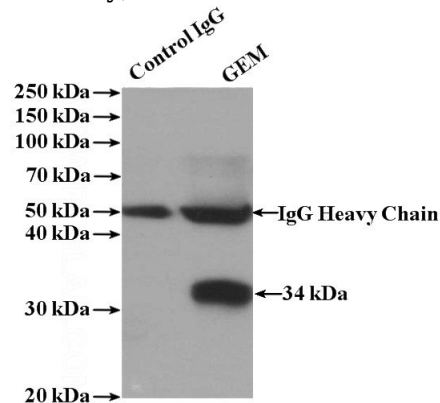
WB: 1:200-1:2000

IP: 1:200-1:1000

## Validations



Jurkat cells were subjected to SDS PAGE followed by western blot with Catalog No:110937(GEM antibody) at dilution of 1:400



IP Result of anti-GEM (IP:Catalog No:110937, 4ug; Detection:Catalog No:110937 1:300) with mouse kidney tissue lysate 4000ug.