

KTELC1 antibody



Catalog Number: 112137

Product name

KTELC1 antibody

Immunogen

[Human KTELC1 Recombinant protein \(His tag\)](#)

Specificity

Human; other species not tested.

Antibody description

KTELC1 Rabbit Polyclonal antibody. Positive WB detected in HepG2 cells, HEK-293 cells, Hela cells. Positive IHC detected in human liver tissue, human colon tissue. Positive IF detected in HepG2 cells. Observed molecular weight by Western-blot: 65 kDa

Preparation

This antibody was obtained by immunization of KTELC1 recombinant protein (Accession Number: NM_152305). Purification method: Antigen affinity purified.

Formulation

PBS with 0.1% sodium azide and 50% glycerol pH 7.3.

Storage

Store at -20°C. DO NOT ALIQUOT

Clonality

Polyclonal

Ig Type

Rabbit IgG

Applications

ELISA, WB, IF, IHC

Dilutions

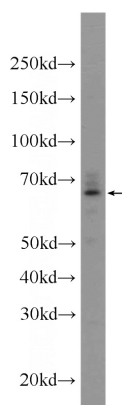
Recommended Dilution:

WB: 1:200-1:2000

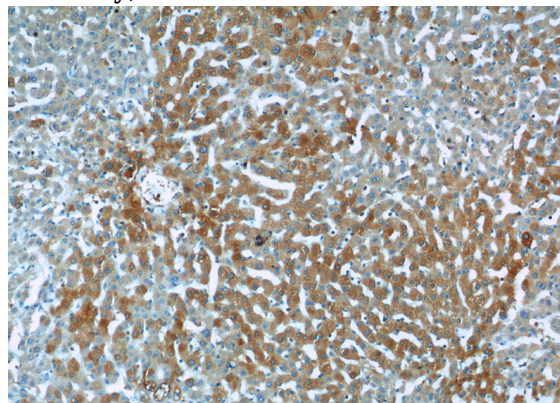
IHC: 1:20-1:200

IF: 1:10-1:100

Validations



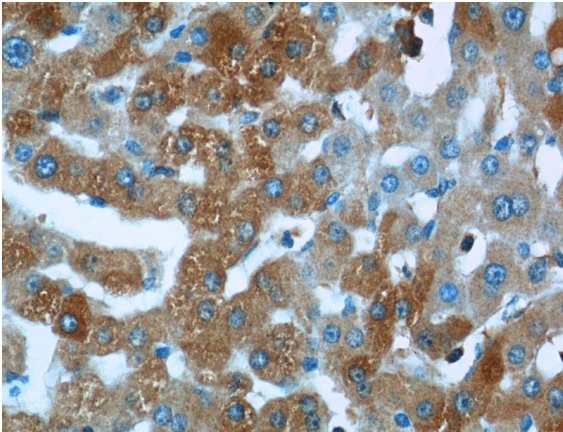
HepG2 cells were subjected to SDS PAGE followed by western blot with Catalog No:112137(KTELC1 Antibody) at dilution of 1:600



Immunohistochemistry of paraffin-embedded human liver tissue slide using Catalog No:112137(KTELC1 Antibody) at dilution of 1:50 (under 10x lens)

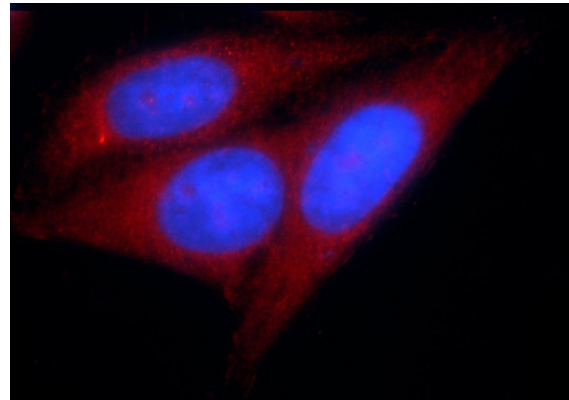
KTELC1 antibody

Catalog Number: 112137



Immunohistochemistry of paraffin-embedded human liver tissue slide using Catalog No:112137(KTELC1 Antibody) at dilution of 1:50

(under 40x lens)



Immunofluorescent analysis of HepG2 cells using Catalog No:112137(KTELC1 Antibody) at dilution of 1:25 and Rhodamine-Goat anti-Rabbit IgG