

# GPRASP1-Specific antibody

Catalog Number: 111137

## Product name

GPRASP1-Specific antibody

## Specificity

Human, Mouse; other species not tested.

## Antibody description

GPRASP1-Specific Rabbit Polyclonal antibody. Positive WB detected in HeLa cells, HepG2 cells, human brain tissue, mouse brain tissue. Positive IHC detected in human brain tissue. Observed molecular weight by Western-blot: 157 kDa

## Preparation

This antibody was obtained by immunization of Peptide (Accession Number: NM\_014710). Purification method: Antigen affinity purified.

## Formulation

PBS with 0.02% sodium azide and 50% glycerol pH 7.3.

## Storage

Store at -20°C. DO NOT ALIQUOT

## Clonality

Polyclonal

## Ig Type

Rabbit IgG

## Applications

ELISA, WB, IHC

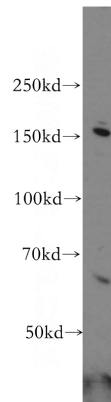
## Dilutions

Recommended Dilution:

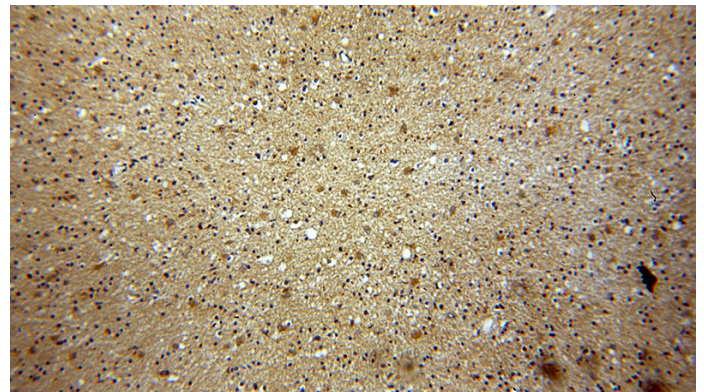
WB: 1:500-1:5000

IHC: 1:20-1:200

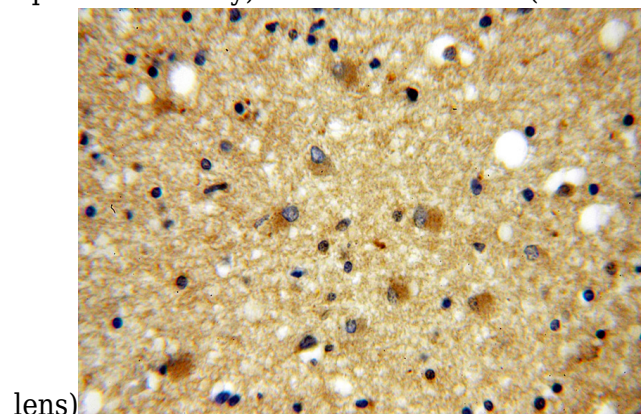
## Validations



HeLa cells were subjected to SDS PAGE followed by western blot with Catalog No:111137(GPRASP1-Specific antibody) at dilution of 1:500



Immunohistochemical of paraffin-embedded human brain using Catalog No:111137(GPRASP1-Specific antibody) at dilution of 1:100 (under 10x



Immunohistochemical of paraffin-embedded human brain using Catalog No:111137(GPRASP1-Specific antibody) at dilution of 1:100 (under 40x lens)